

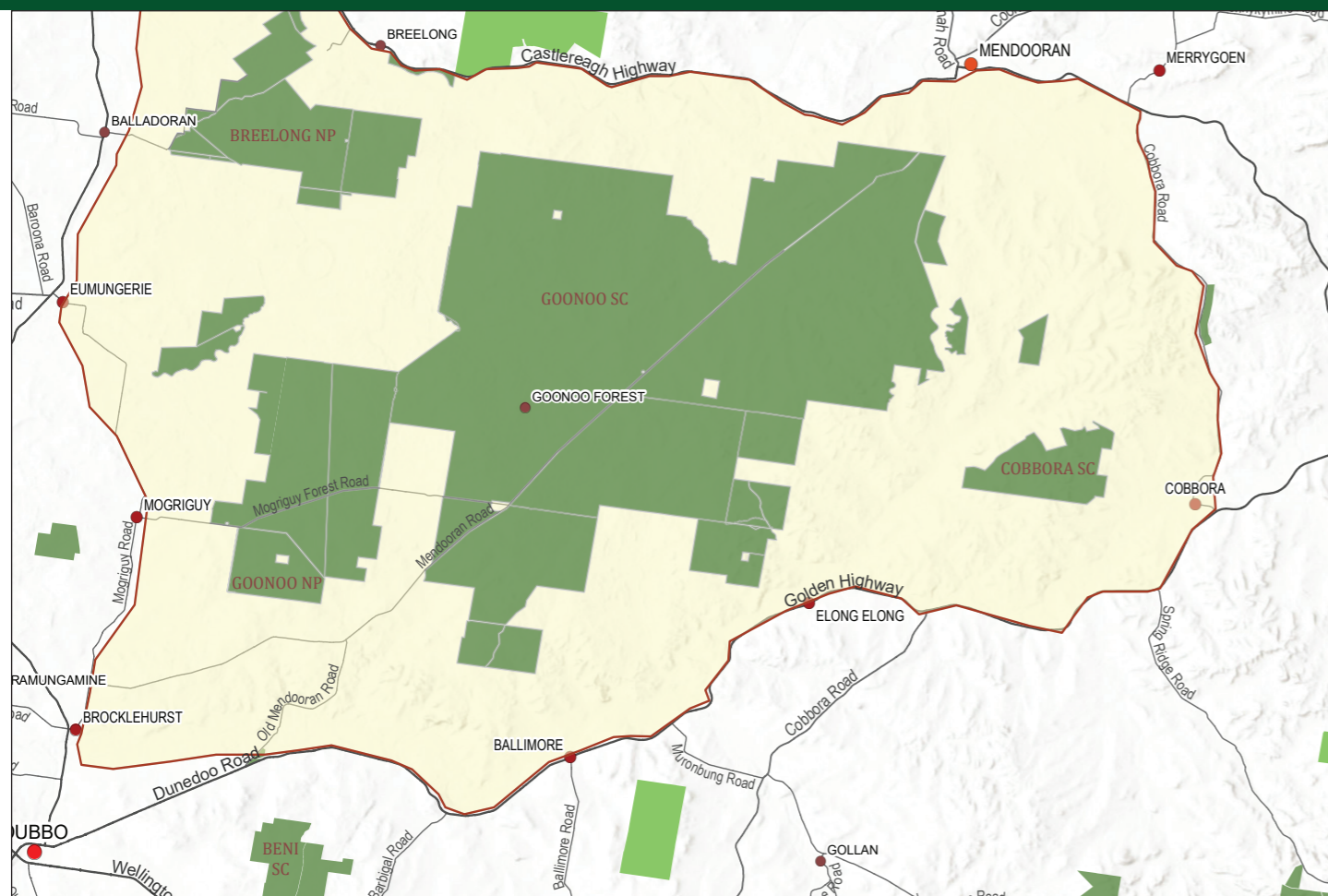


Photo: David Milledge

Local Land Services

Healthy Landscapes Landholder Incentives Woodland Hollows

Woodland Hollows



Map 1: Priority area

- Woodland Priority Area
- Private Land
- National Parks
- State Forests

Disclaimer: Funding is limited, which may mean some incentive projects will not be funded. Central West Local Land Services reserves the right to refuse funding for incentive projects or components which provide insufficient environmental benefit for their cost. Assessment of environmental benefit is at the sole discretion of the Central West Local Land Services. Funding amounts listed are GST exclusive. Funding amounts, activities and project standards are subject to change without notice.

This project focuses on preserving and improving woodland habitat to protect hollow-dwelling threatened species throughout the Central West region. Threatened species found in the Central West that this project prioritises are:

- Barking Owl
- Powerful Owl
- Masked Owl
- Squirrel Glider
- Corben's long-eared Bat
- Yellow Sheath-tailed Bat

Incentive funding is being offered to eligible landholders to undertake targeted on-ground restoration and conservation works to aid in habitat protection and threat abatement. Priority will be given to sites aiming to protect large hollow bearing trees.

How to apply

Applications close Friday 7 October 2022.

To apply, complete an Expression of Interest form and submit:

In person - hand deliver to any Central West Local Land Services Office

Via email - submit as a PDF attachment to:
incentives.centralwest@lls.nsw.gov.au

Once all details have been completed, and the application form returned, a Local Land Services officer will contact you to discuss your project and organise a site visit. Any incomplete applications will be returned to the landholder.

Funding availability is limited and offered based on a Local Land Services team review of the environmental services ratio score and cost per hectare of all proposals. Applications received after the closing date will not be considered.



For further information contact
Catie Guise | Acting Senior Land Services Officer - NRM
PO Box 897 | 46 Sherriff Street | Forbes NSW 2871
M: 0429 982 197 E: catherine.guise@lls.nsw.gov.au

What assistance is available?

This project will provide funding and technical support for the following activities, subject to site assessment and project ranking (please see project standards for more details on each of these activities):

Activity	Description	Dollar amount
Stock-proof fencing	Fencing to control grazing to allow regeneration to occur and improve groundcover. These areas need to be a threatened ecological community. Boundary fencing is ineligible for funding.	\$6,000/km conventional or \$3,000/km electric.
Alternative stock watering points	Available where stock access to water is removed due to project work. Limited to a maximum of one alternative watering point per paddock affected.	\$1,500/trough, \$3,000/trough and tank or \$9,000/dam. Capped at \$9,000 per project.
Paddock tree protection	Stock-proof fencing to protect individual or clumps of trees. Sites must be a minimum of 25m x 25m or out of tree drip line. Sites must be a total minimum of 1ha.	Up to \$8/m stock-proof conventional fencing capped at \$2,000 per paddock tree/clump.
Scattered paddock tree establishment	Planting and stock-proof fencing of individual or clumps of trees. Sites must be a minimum of 25m x 25m or out of tree drip line. Sites must be a total minimum of 1ha.	\$5/tubestock capped at \$1,000 including site preparation, planting and maintenance of native tubestock, plus \$100 per tree guard.
Revegetation	Supplementary tubestock planting.	\$5/tubestock capped at \$1,000 per project for site preparation, planting and maintenance of native tubestock. Local Land Services will supply seed and/or seedlings.
	Direct seeding.	\$2.50/m capped at \$5,000 per project to support site preparation, and maintenance for direct seeding of native plants.
	Combination of tubestock and direct seeding.	\$2.50/m capped at \$5,000 to support site preparation, and maintenance of native tubestock and direct seeding of native plants.
Pest animal and pest plant control	Control in the project area.	Up to \$50/ha capped at \$1,500 per project.
Habitat Augmentation	Installation of artificial tree hollows, augmented hollows and hollow logs.	Arranged by Local Land Services at no cost to the landholder.
Cultural heritage site assessment	Cultural site identification prior to on-ground works will ensure project activities will not cause damage to Aboriginal cultural sites.	Arranged by Local Land Services at no cost to the landholder.

Project standards

Project implementation timeframe. All project infrastructure works must be completed by 31 May 2023. Duration of agreement is 10 years.

Stock-proof fencing. Fences must be constructed with new materials and be maintained in a stock-proof condition for the duration of the agreement. Conventional fencing must be a minimum of 6 wires and electric fencing a minimum of 3 wires. No apron or barbed wire is to be used in the construction of the fence to ensure safe passage of wildlife. **Boundary fencing is ineligible for funding.**

Alternate stock water supply. Available only where stock access to water is removed due to project work. Funding is limited to a maximum of one alternative watering point per paddock affected. Troughs must at a minimum be concrete with a fully enclosed valve chamber and any polythene pipeline must be buried to prevent damage by fire or UV light. It is recommended that new water pipes and fittings are a minimum of 2 inch/ 50 mm internal diameter. Water infrastructure must be maintained for the duration of the agreement.

Individual paddock tree fencing. Planted individual paddock trees must be guarded to protect from grazing animals for the duration of the 10-year agreement. As a minimum, guards need to be 1.8m high, made from sheep mesh or equivalent with 2 steel posts supporting and a minimum 1m diameter.

Supplementary planting and/or revegetation. Plant/seed establishment activities will be coordinated by Local Land Services, including purchase of seed and/or tubestock. A revegetation plan will be developed for the project site by Local Land Services and will include site design, species list, the position, width and length of the planting arrangement and site preparation requirements. Landholders will be required to organise their own site preparation, planting of tubestock and ongoing maintenance as per revegetation plan and advice from Local Land Services. Project areas containing revegetation are to have stock excluded for a minimum of three years to enable successful plant establishment.

Pest plant and pest animal control. All pest animals and pest plants must be controlled on the site for the duration of the agreement. Chemical control must only be with a registered herbicide and in accordance with the directions on the label. If spraying along riparian areas, only chemicals registered for use around waterways are permitted.

Cultural heritage survey. Cultural heritage sites identified within the project area will be maintained and protected. Project activities and ongoing site management must not cause damage to any known

cultural heritage sites. Cultural heritage sites discovered within the project area will be recorded in the Aboriginal Heritage Information Management System.

Management of project area for ground cover. Project areas must be managed to increase perennial plant density and diversity. Groundcover is to be maintained at an average minimum level of 70% across the whole project area for the duration of the agreement. The grazing strategy employed should aim for 100% groundcover. Grazing is not to be undertaken during flowering and seed set during spring and summer. Strategic grazing to manage fire hazards or weeds is permitted if required. If undertaking revegetation, stock is to be excluded from the project area for three years after the completion of on ground works.

Minimise ground disturbance. The site should be managed to minimise ground disturbance that could lead to soil erosion for the duration of the agreement.

Habitat features. Dead standing, fallen timber and rocks are important habitat features and must be retained on the project site. Movement of these features within the site is permitted only if they present a hazard.

Permits and approvals. All relevant permits and approvals for farm water supply dams must be obtained from or approved by appropriate government agencies prior to the commencement of any works.

Legislative requirements. Applicants must comply with all legislative responsibilities imposed by any other relevant Act in developing and implementing the project.

Native Vegetation. Under the Local Land Services Act 2013, any land under this project area cannot be used as a set aside for the duration of the agreement term. The project area may be eligible to undertake Environmental Protection Works in accordance with the Local Land Services Act 2013 and will require an approved project variation.

Monitoring and evaluation. Applicants are required to adhere to and maintain monitoring records for the duration of the agreement, as per the Local Land Services monitoring program. Staff will establish monitoring sites and methods appropriate to your project.

Field day activities and access to the project site. The project site is to be made available for Local Land Services to conduct educational field day activities, provide information for case studies and allow access to Local Land Services staff and any associated contractors for the purposes of on-ground scientific monitoring for the duration of the project.