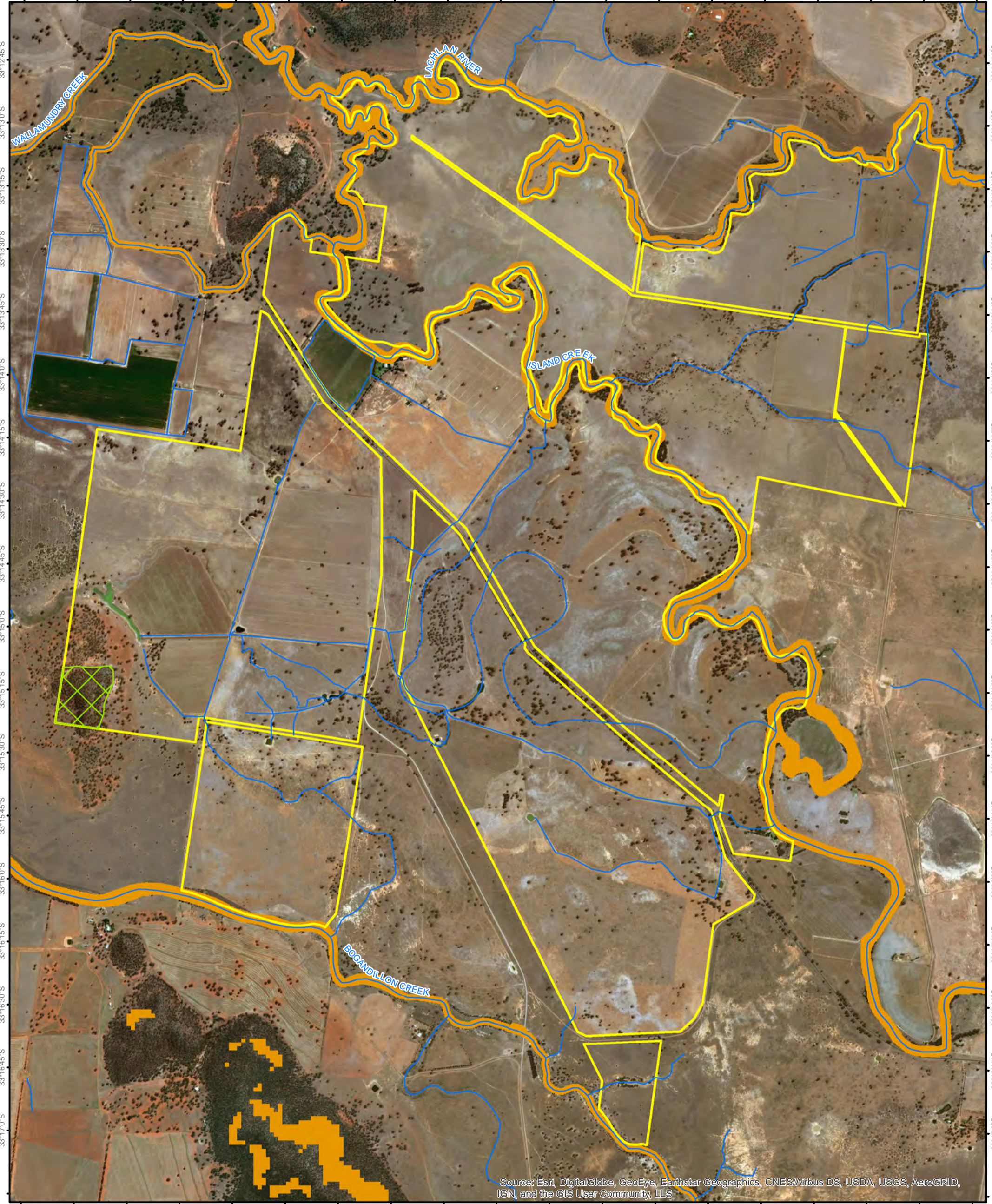




147°18'30"E 147°18'45"E 147°19'0"E 147°19'15"E 147°19'30"E 147°19'45"E 147°20'0"E 147°20'15"E 147°20'30"E 147°20'45"E 147°21'0"E 147°21'15"E 147°21'30"E 147°21'45"E 147°22'0"E 147°22'15"E 147°22'30"E 147°22'45"E 147°23'0"E



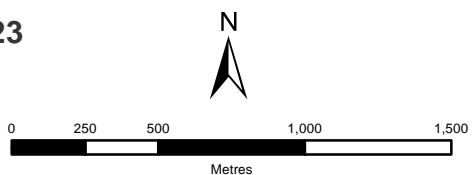
Source: Esri, DigitalGlobe, GeoEye, Earthstar Geographics, CNES/Airbus DS, USDA, USGS, AeroGRID, IGN, and the GIS User Community, LLS

Legend

- Landholding Boundary
- Excluded Land
- Sensitive Regulated Land
- Vulnerable Regulated Land
- Set Aside Area
- Drainage Line

Part: 5
Division: 4
Certificate Number: LMC01223
Image Date: 4 FEB 2015

Map 1 of 1



Disclaimer:
Data has been extracted from digitised field information. The State of NSW and Local Land Services and its employees, officers, agents or servants accepts no responsibility for the result of any actions taken or the decisions made on the basis of the information, or for any errors, omissions or inaccuracies contained in this map.

Sources:
Map created by Local Land Services. Base topographic data supplied by the © NSW Department of Finances and Services.
Reference data © NSW Office of Environment and Heritage.

Projection: Geographic Coordinate System
Datum: Geocentric Datum of Australia 1994
© Copyright New South Wales Government
All Rights Reserved
No part of this map may be reproduced without written permission