



Healthy Landscapes

The Central Tablelands Local Land Services supports land managers and community in working together to build resilient communities in productive healthy landscapes. This project is provided by Central Tablelands Local Land Services through funding from Catchment Action NSW.

About the project

The Healthy Landscapes project assists private land managers to improve the extent, condition and connectivity of native vegetation and streams in priority corridor areas across the Central Tablelands. On-ground incentive funding is available for the following projects:

1. **Stream protection** (up to \$2500/Ha)
2. **Bushland protection** (up to \$1000/Ha)

These incentives will be available to landowners within the region's priority corridor areas (see Figure 1). Projects linking to priority corridor areas through existing native vegetation will also be considered for funding.

If you are unsure whether your property is situated within the priority corridor areas, please contact Allan Wray on 6333 2318.

What assistance is available?

The Healthy Landscapes project will provide incentive funding and technical support for the following on-ground activities:

- **stock-proof fencing** to control stock access to existing native vegetation, stream and planting sites
- **alternative stock watering points** where stock access to water will be lost due to new fencing
- **planting native trees and shrubs** for enhancing stream protection projects only
- **stewardship payment** of a one off payment where stock are excluded from the project area

What is the process?

1. Expressions of Interest (EOI) will open on Thursday 1 August and close at 5pm on Monday 2 September 2019.
2. To apply, complete and submit an online EOI form.
3. Once you have submitted your EOI, an officer will contact you to discuss your project and organise a site visit.
4. During the site visit, the officer will assist in developing your potential project. The project will be assessed to calculate the environmental benefit.
5. The environmental benefit score from your assessment will be used to rank all projects received.
6. Funding offers can then be made to all eligible projects (based on ranking until all funding is exhausted). Should you accept this offer a contract will be created and sent for your signature.
7. Once signed you will be required to complete on-ground activities by the due date and you must manage the site (as per project standards) for a 10 year period.

Eligibility Criteria

To be eligible for funding you must meet the following criteria:

- the project must be located within the priority corridor areas of the Central Tablelands LLS region
- previous agreements with LLS or Catchment Management Authority must be completed
- outstanding LLS rates need to be paid
- you must have \$10 million public liability insurance
- the project area must be greater than 2 Ha
- you must be able to complete all on-ground works by 31 May 2020. Completion of project planting activities may be negotiated with LLS officer subject to seasonal conditions.



Local Land
Services

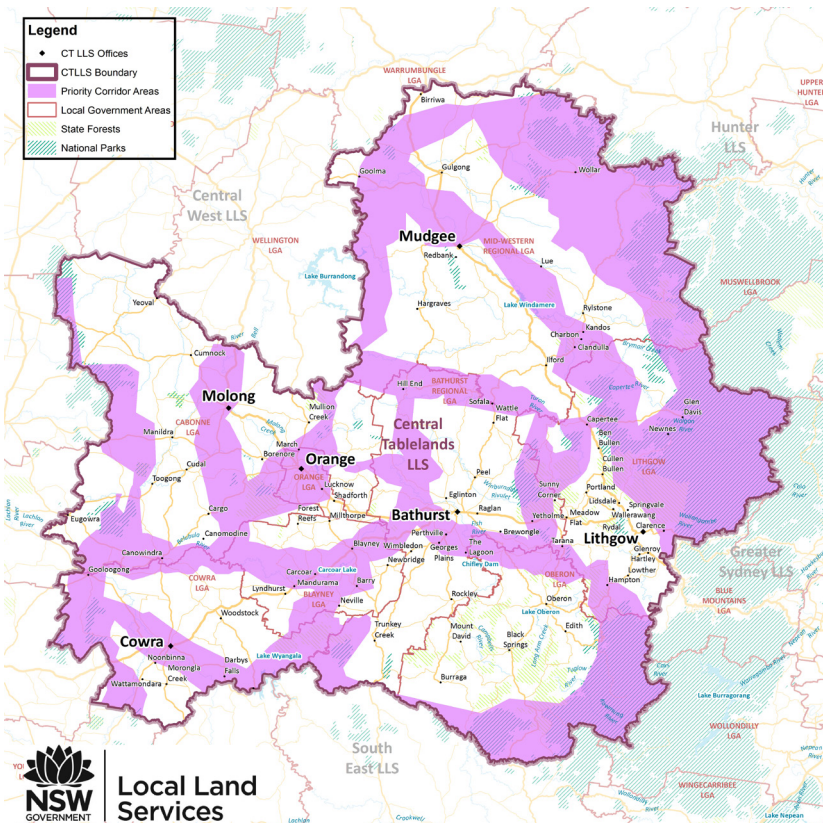


Figure 1: Priority Corridor Areas

Project Standards

All projects must meet standards that relate to:

- **stock-proof fencing** – constructed with new materials and maintained throughout the project (10 years). Conventional 6 line or electric 3 line fencing minimum, preferably without barbed wire for native wildlife movement. Boundary or exclusion fencing will not be funded
- **exotic plant and pest animal control** – pest animals and exotic plants must be controlled within the site for the duration of the agreement
- **grazing management** – strategic grazing within the project area may be allowed subject to discussion with LLS staff. However, you must not graze within planting areas for at least four years.
- **stream project width** – average 20 metres (from the top of the bank) over the length of the site – with a minimum width of 10m
- **retaining habitat features** – such as bush rock, dead standing and fallen timber within the site
- **planting and site preparation** - a plan will be developed with an LLS officer covering site preparation, species selection, planting and future maintenance

A comprehensive list of the project standards is available on our website and will be discussed with you during the site visit.



Visit www.centraltablelands.lls.nsw.gov.au or scan the code above to view an interactive map

How to apply?

Submit an Expression of Interest in one of the following ways:

1. **Online** – visit centraltablelands.lls.nsw.gov.au to complete an Expression of Interest and submit online
2. **In person** – visit your nearest Central Tablelands LLS office

More information

Allan Wray, Senior Land Services Officer
 66 Corporation Avenue Bathurst NSW 2795
 PO Box 20 Bathurst NSW 2795
 Email: allan.wray@lls.nsw.gov.au Ph: 02 6333 2318

