

How to apply

Applications close **Friday 22 May 2020** and will be assessed in the order they are received.

Complete the application form and return:

- In person: hand deliver to any Central West Local Land Services Office. Due to COVID 19 appointments must be made prior to attending our offices. Please call May Fleming 0436 122 140 to arrange an appointment to deliver your application.
- Via email: submit as a PDF attachment to: incentives.centralwest@lls.nsw.gov.au
- Once all details have been completed, and the application form returned, a Central West Local Land Services officer will contact you to discuss your project and organise a site visit. Applications that do not adequately address the project standards will be addressed on a case by case basis.
- Funding availability is limited and offered based on a Central West Local Land Services team review of the Regent Honeyeater priority habitat mapping, site assessment, environmental services ratio scores and cost per hectare of all project proposals.
- Applications received after the closing date will not be considered. If there are technical difficulties prior to the closing time, please contact Central West Local Land Services and a project officer will discuss alternate lodgement options.

This project is supported by Central West Local Land Services, through funding from the Australian Government's National Landcare Program

For further information

May Fleming – Senior Land Services Officer - NRM

E: may.fleming@lls.nsw.gov.au

M: 0436 122 140



Note:

- *Funding is limited, which may mean some projects will not be funded.*
- *Central West Local Land Services reserves the right to refuse funding for projects or project components which provide insufficient environmental benefit for their cost.*
- *Funding amounts listed are GST exclusive. Amounts, funded activities and project standards are subject to change without notice.*
- *Successful on ground activities will be subject to a 10 year agreement.*



Photo:Dean Ingwersen

Central West Local Land Services

*Reaching out to the
Regent Honeyeater*

On-ground Incentives

About the project

The Central West Local Land Services region contains some important habitat for the critically endangered Regent Honeyeater. This bird had previously occupied much of the eastern woodlands of Australia but the species has declined to only around 350 birds left in the wild. The Regent Honeyeater has been spotted at a few locations within the Central West region and with some important breeding grounds in close proximity it is important that we preserve key habitat areas so that passing birds can rest, drink and forage.

The Reaching out to the Regent Honeyeater project aims to increase community awareness about the species, monitor areas of known and potential habitat and carry out on ground works to preserve and restore habitat and corridors in priority areas. The focus of this project is for works to occur in areas with mature Mugga Ironbark, White Box, Yellow Box woodlands and River She-oak as these species provide a critical food source for nomadic birds. Along with these trees, they also seek out flowering mistletoe, in particular Box Mistletoe in box and ironbark woodlands, and Needle-leaf Mistletoe in River She-oak.

Ongoing protection, management and recovery of remnants on private land is crucial to the future survival of this unique species. Priority areas have been identified across the Central West region with recommended activities to support and increase the connectivity and condition of significant habitat.

Priority actions for on-ground improvement include:

- Fencing for stock management and installation of alternative stock watering points
- Pest animal and weed control
- Habitat augmentation including restoration of native vegetation through supplementary planting of native plant species, and installation of habitat features such as hollow logs (subject to site assessment)
- Stock access management to enhance species habitat
- Activities that protect, manage and preserve habitat and improve connectivity of native vegetation



Photo:Bruce Thompson_DPIE

What sort of assistance is available?

Funding for stock proof fencing - Up to \$6,000 per km (conventional) or up to \$3,000 per km (electric) (subject to project assessment) to protect project area.

Funding for alternative watering points - Up to \$3,000 for the cost of materials (subject to project assessment), for additional watering points where stock access to water will be lost because of project work. Landholder to cover installation costs.

Funding and advice for weed and pest animal control - Up to \$15/ha to a maximum of \$2000 for appropriate weed and/or pest animal control activities. Advice and support from Local Land Services Biosecurity Officers on an integrated pest animal control program.

Supplementary plantings of native plant species - Local Land Services will supply appropriate endemic species subject to site assessment and advice on a suitable planting regime.

Site preparation, planting and maintenance - Up to \$5 per seedling for direct planting to a maximum of \$500 or \$2.50 per metre for direct seeding to a maximum of \$500 to support maintenance of supplementary plantings

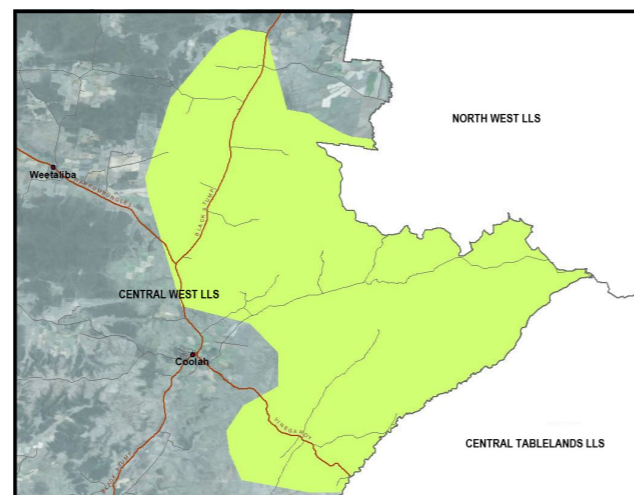
Cultural Heritage survey – Assessment by Local Land Services to be undertaken prior to the commencement of on-ground works that involve any tree or ground disturbance (including fencing) at no cost to the landholder

Technical support - Local Land Services officers to help you plan and implement your project.

Eligibility

To be eligible for funding, landholders must meet the following criteria:

- The project area must be located within the Central West Local Land Services region and within the targeted priority area, see Figure 1 and one/all of the priority tree species Mugga Ironbark, White Box, Yellow Box and River She-oak are present within the project site as these species provide a critical food source for the Regent Honeyeater.
- Fence must be stock proof and maintained in a stock proof condition for the life of the project
- Troughs must at a minimum be concrete with a fully enclosed valve chamber and must be maintained in operational condition for the life of the project
- The applicant must comply with the project standards (see following)
- The applicant must have \$10 million public liability insurance
- Non-payment of rates and other Local Land Services fees and accounts will result in application ineligibility
- All project works must be completed by **30 April 2021**



Map 1: Targeted priority area

Project Standards

Project implementation timeframe. All project infrastructure works must be completed by **30 April 2021**.

Stock-proof fencing. New fences must be constructed with new materials and be maintained in a stock proof condition for the duration of the 10 year agreement. Conventional fencing must be a minimum of 6 wires, electric fencing a minimum of 3 wires. Avoid using barbed wire where possible and replace it with plain wire for the top wire and lowest strands to ensure safe passage of native wildlife. Plain wire to be used for fencing of streams where there is a potential for flooding. Boundary fencing is ineligible for funding.

Supplementary Planting. Plant/seed establishment activities will be coordinated by Central West Local Land Services, including purchase of seed and/or seedlings. The supplementary planting plan is developed in consultation with the project applicant. Landholders will be required to organise for their own site preparation, planting of seedlings and ongoing maintenance as per planting plan and advice from Central West Local Land Services.

Grazing Management Regime. A grazing management regime for the site area will be negotiated during a site assessment for the duration of the agreement. Sites can be strategically grazed up to once annually, with a maximum graze duration of up to three days. The grazing strategy employed should maximise groundcover, according to land capability. Strategic grazing to manage fire hazards or weeds is permitted if required. If supplementary planting, stock are to be excluded from the project area for three years after the completion of supplementary planting on-ground works.

Alternative stock water supply. Available only where stock access to water will be lost because of project work (e.g. project fencing has removed access to a creek or dam). New watering points must be located outside the project area. Funding is limited to a maximum of one alternative watering point per paddock affected. Troughs must at a minimum be concrete with a fully enclosed valve chamber and must be maintained in operational condition for the life of the project. Any polythene pipeline must be buried to prevent damage by fire or UV light. Water infrastructure must be maintained for the duration of the agreement.

Habitat features - dead standing and fallen timber, and bush rock. Bush rock, dead standing and fallen timber are important habitat features and must be retained on the project site. Movement of these features within the site is permitted only if they present a hazard.

Cultural Heritage Survey. A cultural heritage survey may be conducted prior to the commencement of on-ground works. The cultural heritage survey will be organised by Central West Local Land Services staff and at no cost to the landholder. If cultural heritage sites are discovered, they will be recorded in the Aboriginal Heritage Information Management System.

Pest plant and pest animal control. All pest animals and pest plants must be controlled on the site for the duration of the agreement.

Permits and approvals. All relevant permits and approvals for farm water supply dams must be obtained from or approved by appropriate government agencies prior to the commencement of any works.

Legislative Requirements. Applicants must comply with all legislative responsibilities imposed by any other relevant Act in developing and implementing the project.

Native Vegetation. Under the Local Land Services Act 2013, any land under this project area cannot be used as a set aside for the duration of the agreement term. The project area may be eligible to undertake Environmental Protection Works in accordance with the *Local Land Services Act 2013* and will require an approved project variation.

Monitoring and evaluation. Applicants are required to adhere to and maintain monitoring records for the duration of the agreement, as per the Central West Local Land Services monitoring program. Staff will establish monitoring sites and methods appropriate to your project and will provide training and support to ensure monitoring requirements of the project are met.

Field day activities and access to the project site. The project site is to be made available for Central West Local Land Services to conduct an educational field day activity and information provided for case studies if requested. In addition, allow access to Local Land Services staff and any associated contractors for the purposes of on-ground scientific monitoring over the life of the project.