

North West Local Land Services

Quarterly Highlights

JANUARY - MARCH 2021

AG EXTENSION

- 37** ON FARM VISITS
- 23** INDIVIDUAL INQUIRIES
- 170** GROUP EVENT ATTENDANCE

MANAGING PASTURE GROWTH AND LIVESTOCK RESTOCKING OPTIONS, PEST CONTROL IN SUMMER CROPS, FORAGE CROPPING, LAMB SURVIVAL SERIES, INTEGRATED WEED CONTROL.

NORTH WEST BEEF FORUM ATTRACTED **75** PEOPLE IN TAMWORTH ON 23 MARCH.

120 ATTENDEES ACROSS BRED WELL FED WELL WORKSHOPS, PROGRAZE AND LIFETIME EWE MANAGEMENT SERIES RUN IN REGION.

DELIVERED PASTURE IDENTIFICATION FIELD DAY AND PRESENTED AT **6** ADDITIONAL FIELD DAYS ACROSS GRAZING, LIVESTOCK, COTTON AND GRAINS INDUSTRIES.

CUSTOMER SERVICE

The team have...

- 3** MONTHS IN THE LAST
- 1,286** CALLS
- 329** SPOKE TO CUSTOMERS
- 1,054** PROCESSED NOTICE OF SALES
- 336** COMPLETED LAND TRANSFERS

COMMUNITY ENGAGEMENT

- 7** LEAD EVENTS
- 7** PARTNERED EVENTS
- 5** PARTICIPATED IN OTHER EVENT

SEASONAL TOPICS COVERED VIA:

- WEBINAR / FACEBOOK LIVE**
 - BENEFICIAL INSECTS
 - FERAL PIGS
 - PADDOCK TREES
- FACE TO FACE**
 - BEEF PRODUCTION
 - NATIVE PASTURE IDENTIFICATION
 - GRAZING MANAGEMENT
 - PASTURE LEGUMES AND TROPICAL GRASSES
 - MORTALITY SURVEILLANCE PROJECT

250 NEW FOLLOWERS ON FACEBOOK

226,011 IMPRESSIONS ON NWLLS FACEBOOK POSTS

TRAVELLING STOCK RESERVES

- 10,754** HEAD OF CATTLE ACROSS 162,000 Ha
- 8,172** HEAD OF SHEEP ACROSS 162,000 Ha
- 1** NEW BORE COOCOONAH
- 128** PERMITS ISSUED

8 CONTRACTORS ENGAGED TO CARRY OUT WEED CONTROL TARGETING WOODY WEEDS, HUDSON PEAR, MOTHER OF MILLIONS, HARRISSIA.

REPAIRING FLOOD DAMAGE TO FENCING ON TSR.

NATURAL RESOURCE MANAGEMENT

- 5** PROJECTS ANNOUNCED THROUGH CHECK, READY, GROW PROGRAM.
- 2** PROJECT SITES SUPPORTED THROUGH FUNDING FROM THE AUSTRALIAN GOVERNMENT'S NATIONAL LANDSCAPE PROGRAM TARGETING **14 Ha** REVEGETATION AND **87 Ha** HABITAT PROTECTION FOR THE REGENT HONEYEATER AND **20 Ha** OF WETLAND VEGETATION ENHANCED.
- 9** PROJECT SITES TARGETING **1,928 HA** TO REDUCE EROSION AND IMPROVE CATCHMENT REHYDRATION, SOIL CONDITION AND GROUND COVER.

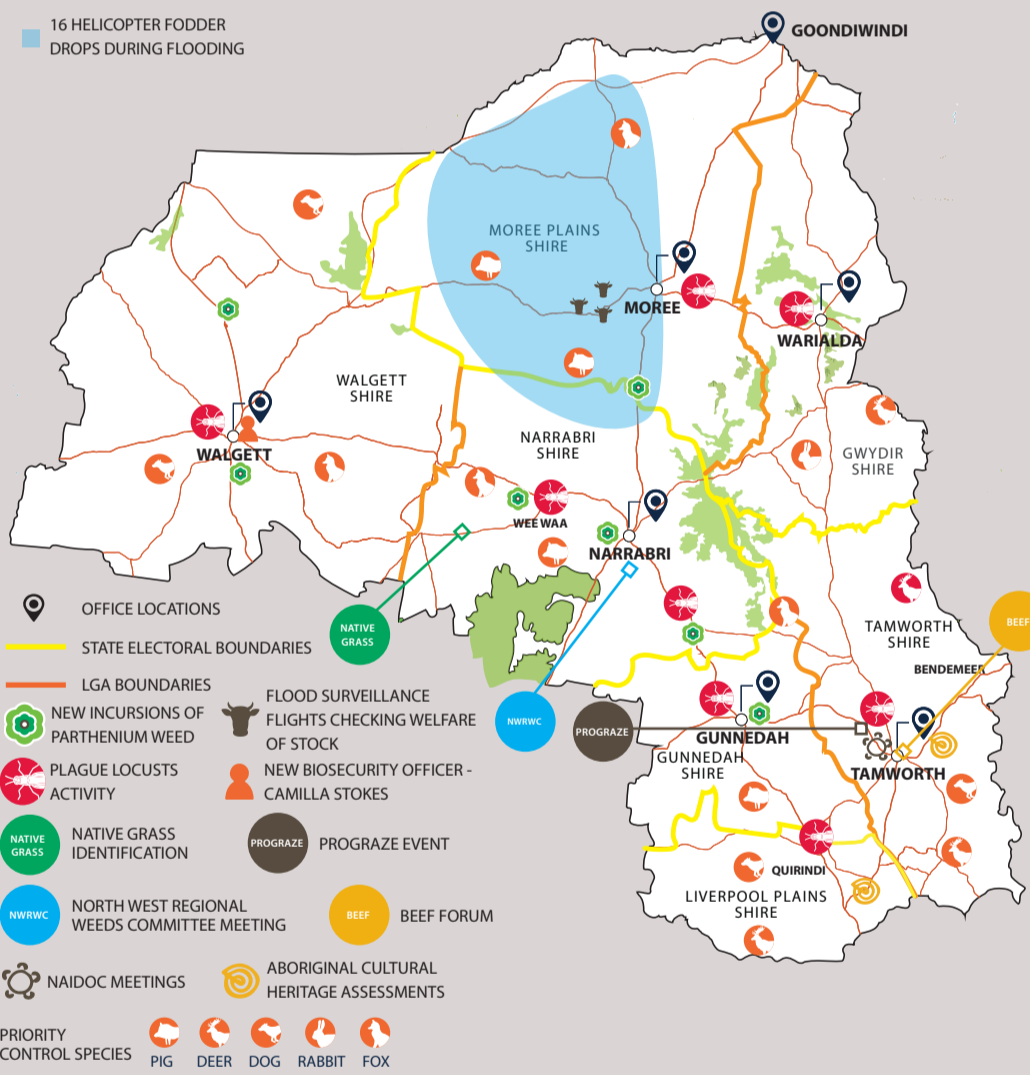
2049 Ha OF WORKS UNDERWAY

- 189** CUSTOMER INTERACTIONS
- 23** ON FARM VISITS

TELL US YOUR PRIORITIES

Put them on the map

TAKE A PHOTO OF YOUR PRIORITIES AND EMAIL TO ADMIN.NORTHWEST@LLS.NSW.GOV.AU



ABORIGINAL CULTURAL HERITAGE

HIGHLIGHTS INCLUDE ONGOING SUPPORT FOR YAWIRI WIRIA MURRI GANUUR DESCENDANTS ABORIGINAL CORPORATION WITH THEIR PROTECTING OUR PLACES GRANT FOR BORAH CROSSING.

- 1** NEW PARTNERSHIP WITH FIRE AND RESCUE TAMWORTH TO CONDUCT A CULTURAL BURN WORKSHOP DURING NAIDOC WEEK.
- 1** NEW ABORIGINAL PROCUREMENT OPPORTUNITY CREATED WITH WEED SPRAYING ON TSRS.

22 ABORIGINAL ORGANISATIONS ENGAGEMENT

EMERGENCY MANAGEMENT

PREVENTION

- 16** FACEBOOK POSTS AND NEWSLETTER ARTICLES OUTLINING PREVENTATIVE STRATEGIES FOR LIVESTOCK OWNERS FOR FIRE, FLOOD AND DISEASE EVENTS.

PREPAREDNESS

- 3** EMERGENCY TRAILERS RE-EQUIPPED
- 3** STAFF FAMILIARISED WITH EMERGENCY TRAILERS AND SETTING UP FIELD POSTS
- 1** STAFF COMPLETED LOGISTICS SUPPORT TRAINING
- 5** STAFF COMPLETED DISINFECTION TRAINING
- 5** STAFF COMPLETED INCIDENT MANAGEMENT TRAINING
- 1** STAFF MEMBER CONDUCTED PLANNING OFFICER TRAINING

RESPONSE

- STAFF AIDED AT **2** TRUCK ROLLOVERS
- IMT ACTIVATED FOR THE NORTH WEST FLOOD RESPONSE AT MOREE
- 21** STAFF FROM DIFFERENT UNITS AIDED IN THE FLOOD RESPONSE EFFORT. THE RESPONSE IS STILL ONGOING

RECOVERY

- RECOVERY PLANS ARE IN DEVELOPMENT FOR THE NORTH WEST FLOOD RESPONSE

BIOSECURITY ANIMAL HEALTH & WELFARE

- 130** DISEASE INVESTIGATIONS
- 434** ADVISORY CONSULTATIONS
- 45** REGULATORY ACTIVITIES

STAFF HAVE BEEN ENGAGED WITH PRIVATE PRACTITIONERS TO DELIVER THE NORTH WEST MORTALITY SURVEILLANCE PROJECT.

16 EXPORTING CERTIFICATES

PNEUMONIA AND BARBERS POLE HAVE BEEN THE TWO MAIN ENDEMIC DISEASES AFFECTING LIVESTOCK.

LAND MANAGEMENT

NATIVE VEGETATION CLEARING ADVICE

- 182** ENQUIRIES
- 43** PROPERTY VISITS
- 98** CERTIFICATES TO DATE
- 211** NOTIFICATIONS TO DATE

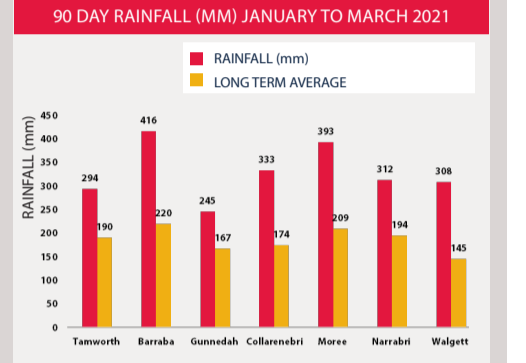
WEED ACTION PROGRAM

- 6,865 Km** ROADSIDE HIGH RISK INSPECTIONS
- 699** PRIVATE PROPERTY INSPECTIONS (INC. HIGH RISK PROPERTIES) ACROSS **184,215 Ha**
- 182 Km** WATERWAY HIGH RISK INSPECTIONS
- 125** INSPECTIONS OF CROWN, COUNCIL LANDS, RESERVE AND ARTC AREAS
- 185** OTHER HIGH-RISK SITES, INCLUDING BORDER CORSSINGS, GRAIN HANDLING SITES, SALEYARDS, QUARRIES AND RURAL OUTLETS

CACTI CONTROL PROGRAM

FOCUS ON MEALY BUG TRAILS ON HARRISSIA CACTUS AT BOGGABILLA. COLLABORATED ON THE NATIONAL ESTABLISHED WEEDS PRIORITIES FRAMEWORK. ATTENDED THE NW NE LANDSCAPE AWARDS, FARMING FOR CHANGE WORKSHOP, BARRABA SHOW DISPLAY, REGIONAL WEED RISK ASSESSMENT WORKSHOP AND HARRISSIA CACTUS TASKFORCE MEETING.

SUMMER EDITION OF CACTUS QUARTERLY RELEASED TO **292** SUBSCRIBERS INCLUDING UPDATES ON CACTI RELATED ACTIVITIES HAPPENING IN THE REGION.



TSR CONDITION SUMMARY JANUARY TO MARCH 2021

LGA	Groundcover %	Pasture Biomass (kgDM/ha)	Condition rating
Tamworth	80>	2,000>	Excellent
Liverpool Plains	80>	2,000>	Excellent
Gunnedah	80>	2,000>	Excellent
Gwydir	80>	2,000>	Excellent
Narrabri	60 - 80	1,500 - 2,000	Good
Moree Plains	80>	2,000>	Excellent
Walgett	60 - 80	2,000>	Good

PASTURE CONDITIONS

PASTURE CONDITION REMAINS STABLE TO IMPROVING ACROSS THE REGION DUE TO ONGOING SEASONAL RAINFALL AND LOW STOCK NUMBERS.

TSRS ARE SUPPORTING BIOMASS LEVELS RANGING FROM 500 - 3000KGDM/HA WITH CONDITION ASSESSMENTS INDICATING GROUND COVER IN THE 'EXCELLENT' CONDITION CATEGORY ON 73% OF TSRS INSPECTED.

INVASIVE SPECIES

BAITS ISSUED

- 1,981 Kg** ACROSS **7** HOLDINGS
- 4,382** baits ACROSS **85** HOLDINGS
- 2,368** baits ACROSS **32** HOLDINGS
- 246 Kg** ACROSS **7** HOLDINGS
- 1,055 Ltrs** PLAGUE LOCUST CHEMICAL ISSUED TO **111** LANDHOLDERS IN DECEMBER

1,350 LANDHOLDER CONSULTATIONS

RESPONSE TO PLAGUE LOCUSTS IN THE MOREE AND WARIALDA AREAS JAN-FEB. **246** PLAGUE LOCUST REPORTS RESPONDED TO DURING THIS PERIOD.

AUTUMN WILD DOG AND FOX PROGRAMS COMMENCED IN MARCH AND WILL RUN THROUGH TO THE END OF MAY.

IMPROVED SEASONAL CONDITIONS HAS SEEN AN INCREASE IN MICE POPULATIONS ACROSS THE NORTH WEST. FOR THE LATEST INDUSTRY LEADING ADVICE AND RESOURCES TO HELP MONITOR AND CONTROL MICE, VISIT THE GRDC WEBSITE: [HTTPS://BIT.LY/3GBJK78](https://bit.ly/3GBJK78)

UPCOMING EVENTS

MAY

- 4 TOP FODDER - SUCCESSFUL SILAGE MAKING
- 5 VERTEBRATE PESTICIDE TRAINING WARIALDA

JUNE

- 1 BRIGALOW: BUGS, BIRDS AND BATS - WEBINAR
- 22 PASTURES RESEARCH UPDATE

CONNECT WITH US

- www.lls.nsw.gov.au/regions/north-west
- [/northwestlocalandservices](https://www.facebook.com/northwestlocalandservices)
- [@north.west.lls](https://www.instagram.com/north.west.lls)
- www.eepurl.com/bvVYif