

# Soil Nesting Native Bees



Leafcutter Bee burrow, *Megachile maculariformis*  
Photo – Megan Halcroft  
*Megachile leafcutter* Photo – Michael Duncan

## Did you know the great majority of Australian bees are soil nesting?

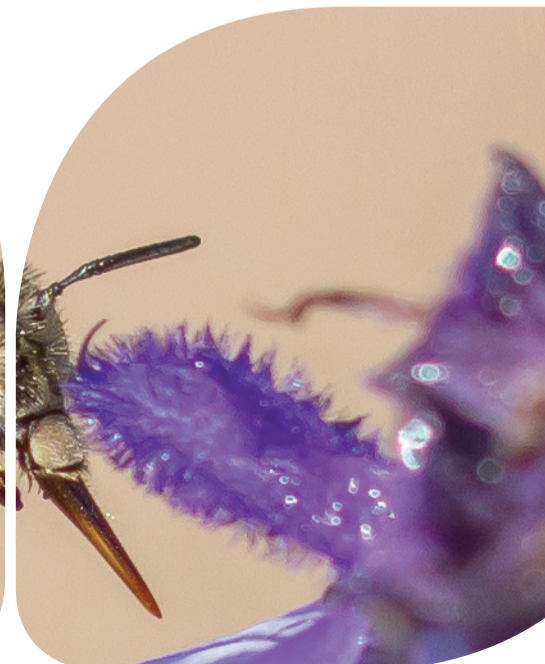
- A location with permanently undisturbed soil will provide them with more nesting and breeding opportunities on your farm.
- Farming practices that inhibit or destroy nests, like extensive ploughing should be avoided in these selected nesting areas.
- Set aside some semi-bare, permanently untilled ground, especially near water bodies such as dams and creeks.

### For more information...

[www.centraltablelands.lls.nsw.gov.au](http://www.centraltablelands.lls.nsw.gov.au)



facebook.com/CentralTablelandsLLS  
twitter.com/CTablelandsLLS



Blue Banded Bee *Amegilla\_sp*  
Photo – Michael Duncan