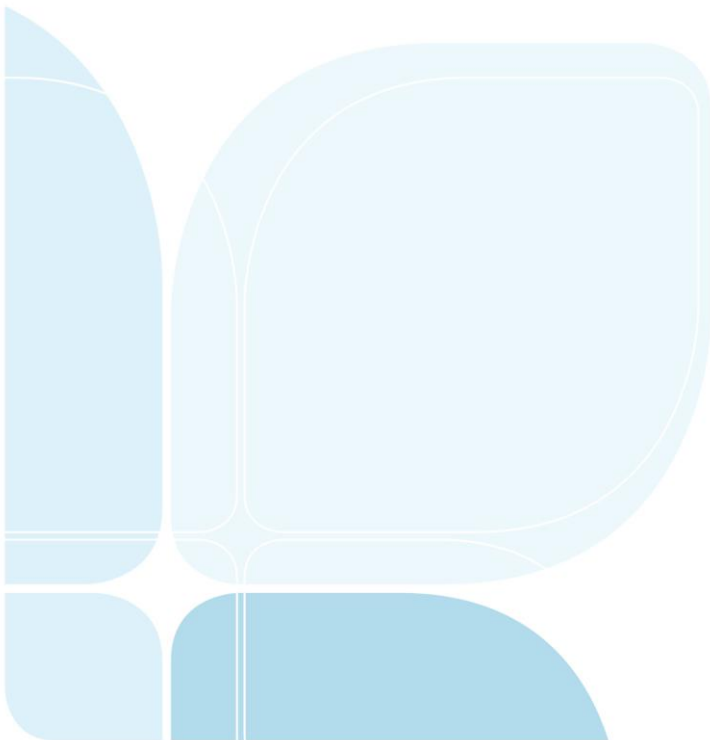




Local Land
Services

Western Weed Management Program

Guidelines and conditions for weed
management projects



Contents

1. About the program	2
2. What can I apply for?	2
Eligible activities and expenses	2
Ineligible activities and expenses	3
3. Applicant eligibility	3
4. Conflict of Interest	4
5. Conditions of funding	4
6. How to apply:	4
7. Assessment and notification process	5
8. Application feedback	5
9. How your information is used	5
10. How to submit your application	5
11. More information: Project officers	6
Appendix A –Threatened Ecological Communities and Priority Landscapes in the Western Region	7
Appendix B – Priority Weed Listing – Western Regional Weed Management Plan 2017-2022	8

1. About the program

The Western Weed Management program seeks to improve and sustain the condition of natural resources in the Western Local Land Services (Western LLS) region by implementing control measures for weeds.

The Western Weed Management Program will also compliment the Western Regional Strategic Weed Management Plan 2017-2022. This plan identifies and categorises known weed risks in the Western region along with setting the following goals:

- Goal 1: Responsibility for weed biosecurity is shared by all people of the Western region
- Goal 2: Weed biosecurity supports profitable, productive and sustainable primary industries
- Goal 3: Weed biosecurity supports healthy, diverse and connected natural environments
- Goal 4: Weed biosecurity is supported by coordinated, collaborative and innovative leadership

The priority weed listing set out by the Western Regional Strategic Weed Management Plan will be used to guide investment priorities for this Program. Please see Appendix B for the Priority Weed Listing applicable to the Western Region. For more information on the Regional Strategic Weed Management Plans please visit www.lls.nsw.gov.au/biosecurity/weed-control.

Emphasis will also be placed on projects that will improve the condition of the following environmental priorities in our region (please see Appendix A for a map of environmental priorities in the Western region):

- regionally significant habitats and communities in the Western Region (e.g Barrier Ranges)
- threatened ecological communities (e.g Acacia Ioderi and Coolibah-Black Box)
- threatened species habitat (e.g known mallee fowl areas)
- RAMSAR wetlands (e.g the Paroo River Wetlands).

Please note that due to funding conditions, applications focused on the control of listed noxious weeds may be required to demonstrate how management will benefit a priority environmental area.

2. What can I apply for?

As part of your application you need to provide a detailed budget table outlining the total cost of the project. Note that Western LLS will contribute a maximum of 40 % of the total project cost. When filling out the 'LLS Contribution' section of the budget you will need to calculate 40 % of the total budgeted job cost. This is the contribution Western LLS may make to the overall project. Non-for-profit groups must demonstrate their status in order to be exempt from this cost sharing condition. Note also that the funding contribution may be negotiated for projects that identify a targeted weed species classified as "Prevent" under the Western Regional Strategic Weed Management Plan.

All of the figures included in the budget must be GST exclusive and based on quotes.

- You must source quotes and attach them to your application. If your application is successful, there is no allowance for price increases.
- The labour component of the budget will be calculated using the set hourly rate of \$25.00/hr. If a contractor of any form is to be used, time must still be budgeted at this rate. Fuel also may be budgeted for, however hire costs of plant and machinery must be borne by the applicant.

Eligible activities and expenses

As projects are funded as a portion of whole project cost, all costs associated with completing the intended project should be included in the application. These include:

Labour	Includes landholders' own labour, employees or contractors, however all are costed at the same static rate.
Chemical	If herbicide is being used for weed control this must be included in the budget costings.
Fuel	For machinery required for control works or diesel to mix with chemical.
Other	Costs associated with other products that align with a best practice, integrated control program.

Ineligible activities and expenses

The following activities and/or expenses are considered ineligible under the Western Weed Management program:

- purchase of capital equipment, e.g a spray units
- while fuel and labour costs should be included in project costs, additional hire costs associated with contractors should not be included in the budget
- the purchase of items that do not align with best practice management of the identified weed
- activities or items that pose a high risk or hazard to causing an injury, illness or disease or damage/loss to property, plant or equipment
- training or administrative costs, including but not limited to ChemCert accreditation courses
- projects that focus control works on Invasive Native Scrub. The control of native species is not a priority for this funding and is considered ineligible.

3. Applicant eligibility

The program is available to:

- Individual landholders or organisations operating at a property scale. Note that the applicant must be the landowner, or have written permission from the landowner to apply.
- Non-for profit groups applying to undertake works on public land (e.g.Crown Reserves, Commons).

All works must be carried out on properties located within the Western LLS Region. If unsure of your LLS region, please refer to www.lls.nsw.gov.au/our-regions/whats-my-region or contact one of the Western LLS staff listed in Section 11.

The program is not available to:

- individuals with an outstanding monitoring activity with Western LLS or the former Catchment Management Authority
- individuals with outstanding contracts with Western Local Land Services, including incomplete weed management contracts.
- individuals with outstanding debt, including rates, owing to Local Land Services
- applicants applying for works proposed on land located outside the Western region
- group applications for works to be completed on privately owned or managed land.

4. Conflict of Interest

LLS staff and board members are required to identify and declare conflicts of interest so that they can be managed in an open and transparent way. This policy extends to external parties or individuals who may be associated with LLS staff or LLS board members through immediate family relationships, close friendships or business relationships. All applicants will be required to complete a brief checklist in the application form which will identify any such conflicts. Should a conflict be identified, a conflict of interest declaration form will be provided to the applicant to complete.

5. Conditions of funding

If your application is successful, the following conditions of funding will apply:

- you must formally commit to undertaking your project by entering into a Funding Agreement with Western LLS
- the Term of the Funding Agreement will be for a period of 5 Years
- payment of 50 % will be made up front on acceptance of the Funding Agreement, the remaining 50 % will be paid on successful completion of the contracted works
- all contracted works must be completed by 2nd May 2018. Note that an inspection will be carried out by Western LLS staff to verify the successful completion of the project
- variations to the Funding Agreement must be requested in writing to the project manager and will be assessed on a case by case basis
- you must agree to allow Western Local Land Services to publish information about you and your project on our website, Facebook page and other communication channels and products as required
- you must provide invoices supporting the spend of outlined budget items
- you must complete and submit a survey following the successful completion of contracted works, note that final payment will not be made until this requirement has been fulfilled
- you must complete and submit a follow-up survey 5 years following the completion of contracted works.

It is recommended that you do not apply for funding if you're not able to meet these conditions.

6. How to apply:

Interested landholders are required to complete the following application process:

1. To apply, you must complete the Western Weed Management Program Expression of Interest form, available from www.western.ils.nsw.gov.au or contact the Western LLS staff listed in Section 11 to request a form. **Expressions of interest must be submitted by 5 pm EST Friday 13 October 2017.**
2. Following the closure of expressions of interest a Western LLS staff member will be assigned to work with you on your project proposal. They will conduct a property visit, assisting you to prepare a management plan for your project and complete a project map. You will also be required to complete an applicant eligibility checklist, budget and risk assessment. **The management plan and application form must be submitted by 5 pm EST Wednesday 15 November 2017.**

7. Assessment and notification process

Following the submission of management plans, proposals will be assessed by a panel of industry experts, independent landholders and Western LLS staff. The panel will assess each project against the following questions:

1. Is the project within, or in proximity to a priority environmental area? (RAMSAR, Threatened Ecological Community/Threatened Species, Regionally Significant)
2. To what extent has the applicant demonstrated an awareness of the properties current weed status?
3. To what extent has the applicant demonstrated an understanding of weed incursion risks?
4. To what extent has the applicant identified and implemented biosecurity practices for managing weed spread and incursion prevention?
5. To what extent do the control methods outlined align with known best practice treatment methods?
6. To what extent has the applicant demonstrated a strategic and cost-effective approach in terms of control and targeted area?
7. Is the targeted species is considered a priority in the Regional Weed Strategic Plan? (scoring against the following: Prevent, Eradicate, Contain, Asset Protection, Unlisted non-native).

Applications will be scored and ranked accordingly. Funds will be allocated as per the ranking order of eligible projects until funds are exhausted. You will receive notification from Western LLS when your application has been assessed to inform you about the outcome of your application and the next steps (if your application is successful).

8. Application feedback

If your application is not successful you can ask for feedback about why it was not supported. To receive feedback, please contact the Western Weed Management Program - Regional Coordinator: Brian Dohnt. Contact details are provided in Section 11.

9. How your information is used

The information you provide to Western LLS in your application will be stored and used in accordance with the Privacy Act 1988. If you have concerns about the amount or type of information we require in the application form, please contact the relevant Project Officer listed below in **Section 12**.

Projects with an LLS financial contribution greater than \$150,000 are required to be listed on a public register. By signing the Funding Agreement, you provide consent for Western LLS to publish the following information on the public register:

- the applicant's name and location
- the amount of funding granted
- A brief description of the project.

Western LLS will also use this information to communicate to the public about the program. This may include publishing communication articles on our website, social media and other communication channels and products, as required.

10. How to submit your application

Email your expression of interest to: Kerry.wood@lls.nsw.gov.au

Alternatively, you can post your Expression of Interest to: Western Weed Management Program, PO Box 307 Cobar, NSW 2835. **Expressions of interest must be submitted by 5 pm EST Friday 13 October 2017.**

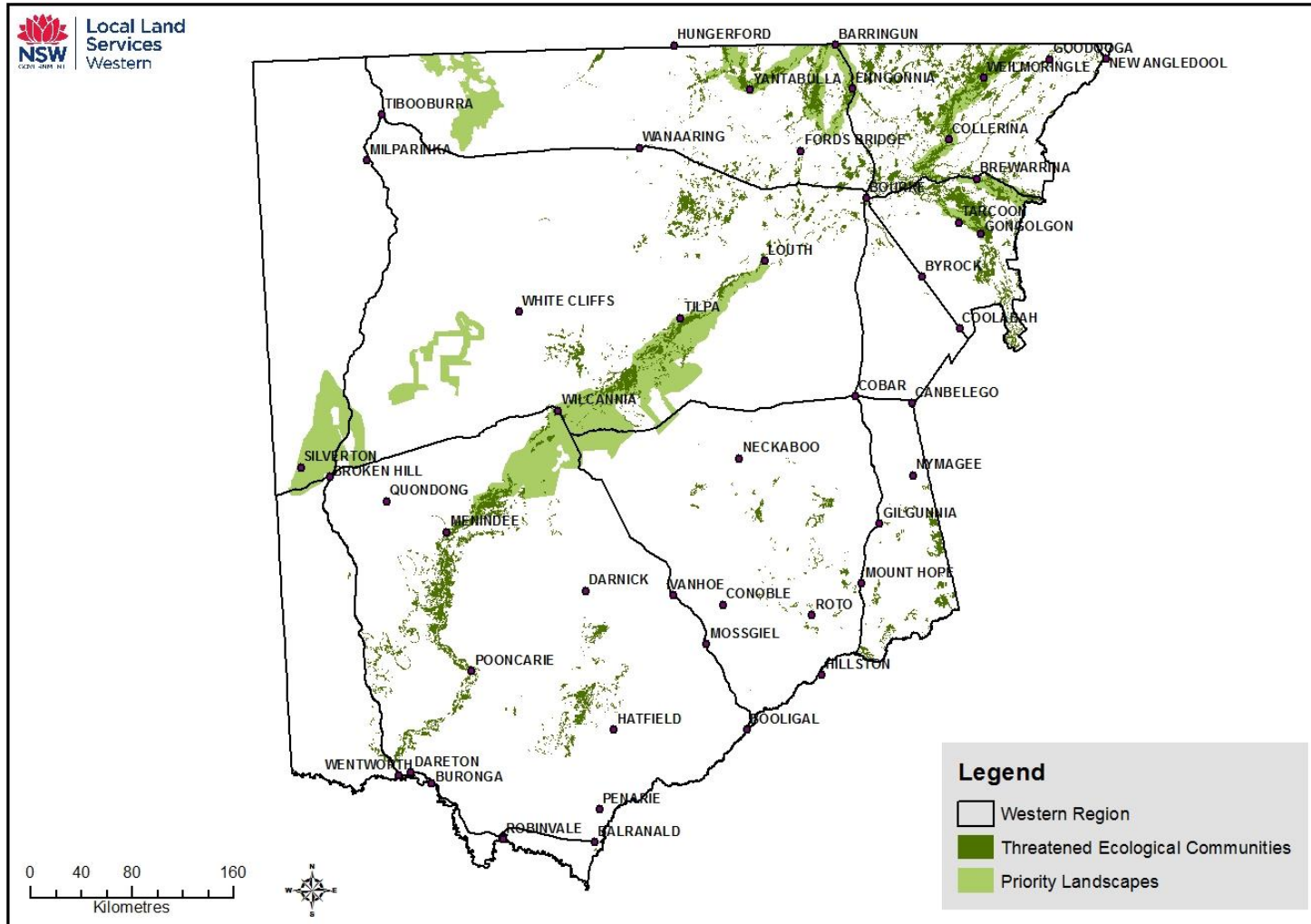
11. More information: Project officers

For more information about the Western Weed Management Program or for advice on your project idea please contact:

Location	Staff contact	Phone	Email	Address
Regional program coordinator (Cobar)	Brian Dohnt	(02) 6836 1575 / 0455901258	Brian.dohnt@lils.nsw.gov.au	62 Marshall Street/ PO Box 307 Cobar NSW 2835
Bourke	Kyra Roach	(02) 6870 8626	Kyra.roach@lils.nsw.gov.au	21 Mitchell Street Bourke NSW 2840
Broken Hill	Mitch Plumbe	(08) 8082 5204	Mitchell.plumbe@lils.nsw.gov.au	32 Sulphide Street Broken Hill NSW 2840
Buronga	Greg Moulds	(03) 5021 9444	gregory.moulds@lils.nsw.gov.au	32 Enterprise Way Buronga NSW 2739
Hillston	Shae Brennan	(02) 6967 1639	Shae.brennan@lils.nsw.gov.au	180 High Street Hillston NSW 2675
	Jasmine Wells	0417 488 496	Jasmine.wells@lils.nsw.gov.au	

Appendix A –Threatened Ecological Communities and Priority Landscapes in the Western Region

For more information regarding priority areas, please contact project staff listed in Section 11.



Appendix B – Priority Weed Listing – Western Regional Weed Management Plan 2017-2022

Priority weeds for the Western region				
Species name	Control objective			
	Prevent	Eradicate	Contain	Asset protection
State determined priority weeds				
African boxthorn - <i>Lycium ferocissimum</i>				
Alligator weed - <i>Alternanthera philoxeroides</i>				
Anchored water hyacinth - <i>Eichhornia azurea</i>				
Asparagus weeds - <i>Asparagus aethiopicus</i> , <i>A. africanus</i> , <i>A. asparagoides</i> Western Cape form*, <i>A. plumosus</i> , <i>A. scandens</i>				
Athel pine - <i>Tamarix aphylla</i>				
Bellyache bush - <i>Jatropha gossypifolia</i>				
Bitou bush - <i>Chrysanthemoides monilifera</i>				
Blackberry - <i>Rubus fruticosus</i> agg.				
Black knapweed - <i>Centaurea xmoncktonii</i>				
Boneseed - <i>Chrysanthemoides monilifera</i> subspecies <i>monilifera</i>				
Bridal veil creeper - <i>Asparagus declinatus</i>				
Broomrape - <i>Orobancha</i> spp. (all species except the native <i>O. cernua</i> var. <i>Australiana</i> and <i>O. minor</i>)				
Cabomba — <i>Cabomba caroliniana</i>				
Cape/Montpellier broom — <i>Genista monspessulana</i>				
Cat's claw creeper - <i>Dolichandra unguis-cati</i>				
Chilean needle grass - <i>Nassella neesiana</i>				
Fireweed - <i>Senecio madagascariensis</i>				
Frogbit / spongeplant - <i>Limnobium</i> spp. (all species)				
Gamba grass - <i>Andropogon gayanus</i>				
Gorse — <i>Ulex europaeus</i>				
Hawkweed - <i>Hieracium</i> spp (all species)				
Hydrocotyl/water pennywort - <i>Hydrocotyle ranunculoides</i>				
Karoo acacia - <i>Vachellia karroo</i> (syn. <i>Acacia karroo</i>)				
Kochia - <i>Bassia scoparia</i> (excluding subsp. <i>trichophylla</i>)				
Koster's curse - <i>Clidemia hirta</i>				
Lagarosiphon - <i>Lagarosiphon major</i>				

Priority weeds for the Western region				
Species name	Control objective			
	Prevent	Eradicate	Contain	Asset protection
State determined priority weeds				
Lantana - <i>Lantana camara</i>				
Madeira vine - <i>Anredera cordifolia</i>				
Mesquite - <i>Prosopis spp.</i>				
Mexican feather grass - <i>Nassella tenuissima</i> (syn. <i>Stipa tenuissima</i>)				
Miconia - <i>Miconia spp.</i> (all species)				
Mikania vine - <i>Mikania micrantha</i>				
Mimosa - <i>Mimosa pigra</i>				
Olive hymenachne — <i>Hymenachne amplexicaulis</i>				
Opuntoid cacti - <i>Opuntia spp.</i> , <i>Cylindropuntia spp.</i> , <i>Austrocylindropuntia spp.</i> (Excludes <i>O. ficus-indica</i>) (opuntoid cacti)				
Parkinsonia - <i>Parkinsonia aculeate</i>				
Parthenium weed - <i>Parthenium hysterophorus</i>				
Pond apple - <i>Annona glabra</i>				
Prickly acacia - <i>Vachellia nilotica</i> (syn. <i>Acacia nilotica</i>)				
Rubber vine - <i>Cryptostegia grandiflora</i>				
Sagittaria - <i>Sagittaria platyphylla</i>				
Salvinia - <i>Salvinia molesta</i>				
Scotch/English broom — <i>Cytisus scoparius subsp. scoparius</i>				
Serrated tussock - <i>Nassella trichotoma</i>				
Siam weed - <i>Chromolaena odorata</i>				
Silver-leaf nightshade - <i>Solanum elaeagnifolium</i>				
Spotted knapweed - <i>Centaurea stoebe subsp. micranthos</i>				
Tropical soda apple - <i>Solanum viarum</i>				
Vascular plant (all species) - <i>Tracheophyta spp.</i>				
Water caltrop - <i>Trapa spp.</i> (all species)				
Water hyacinth - <i>Eichhornia crassipes</i>				
Willows — <i>Salix spp.</i> (excludes <i>S. babylonica</i> , <i>S.X calodendron</i> & <i>S. x reichardtiji</i>)				

Priority weeds for the Western region				
Species name	Control objective			
	Prevent	Eradicate	Contain	Asset protection
State determined priority seeds				
Water milfoil - <i>Myriophyllum spicatum</i>				
Water soldier - <i>Stratiotes aloides</i>				
Witchweed - <i>Striga spp.</i> (except the native <i>S. parviflora</i>)				
Yellow burrhead - <i>Limnocharis flava</i>				
Region determined priority weeds				
African boxthorn - <i>Lycium ferocissimum</i>				
Bitou bush - <i>Chrysanthemoides monilifera</i>				
Boxing glove/coral cactus - <i>Cylindropuntia fulgida</i>				
Bridal creeper – <i>Asparagus asparagoides</i>				
Burr ragweed - <i>Ambrosia confertiflora</i>				
Clock weed - <i>Oenothera curtiflora</i>				
Coolatai grass - <i>Hyparrhenia hirta</i>				
Devil’s rope - <i>Cylindropuntia imbricata</i>				
Giant reed - <i>Arundo donax</i>				
Harrisia cactus - <i>Harrisia martinii</i>				
Hudson pear - <i>Cylindropuntia rosea</i>				
Mesquite - <i>Prosopis spp</i>				
Mother of millions - <i>Bryophyllum spp. and hybrids</i>				
Prickly pears - <i>Opuntia spp*</i> . *Including wheel cactus, prickly pear, velvet tree pear, tiger pear, Riverina pear, smooth tree pear) (Note: excludes Indian fig – see above)				
Sagittaria – <i>Sagittaria calycina</i> (Arrowhead), <i>Sagittaria platyphylla</i> (<i>Sagittaria</i>)				
Silver-leaf nightshade - <i>Solanum elaeagnifolium</i>				
Spiny burrgrass - <i>Cenchrus longispinus</i> , <i>Cenchrus spinifex</i> (<i>syn. C. incertus</i>)				
Water hyacinth - <i>Eichhornia crassipes</i>				
Willow rhus - <i>Searsia lancea</i>				

The Western Weed Management Program is delivered by Western Local Land Services through funding provided by the Australian Government National Landcare Programme and Catchment Action New South Wales.

