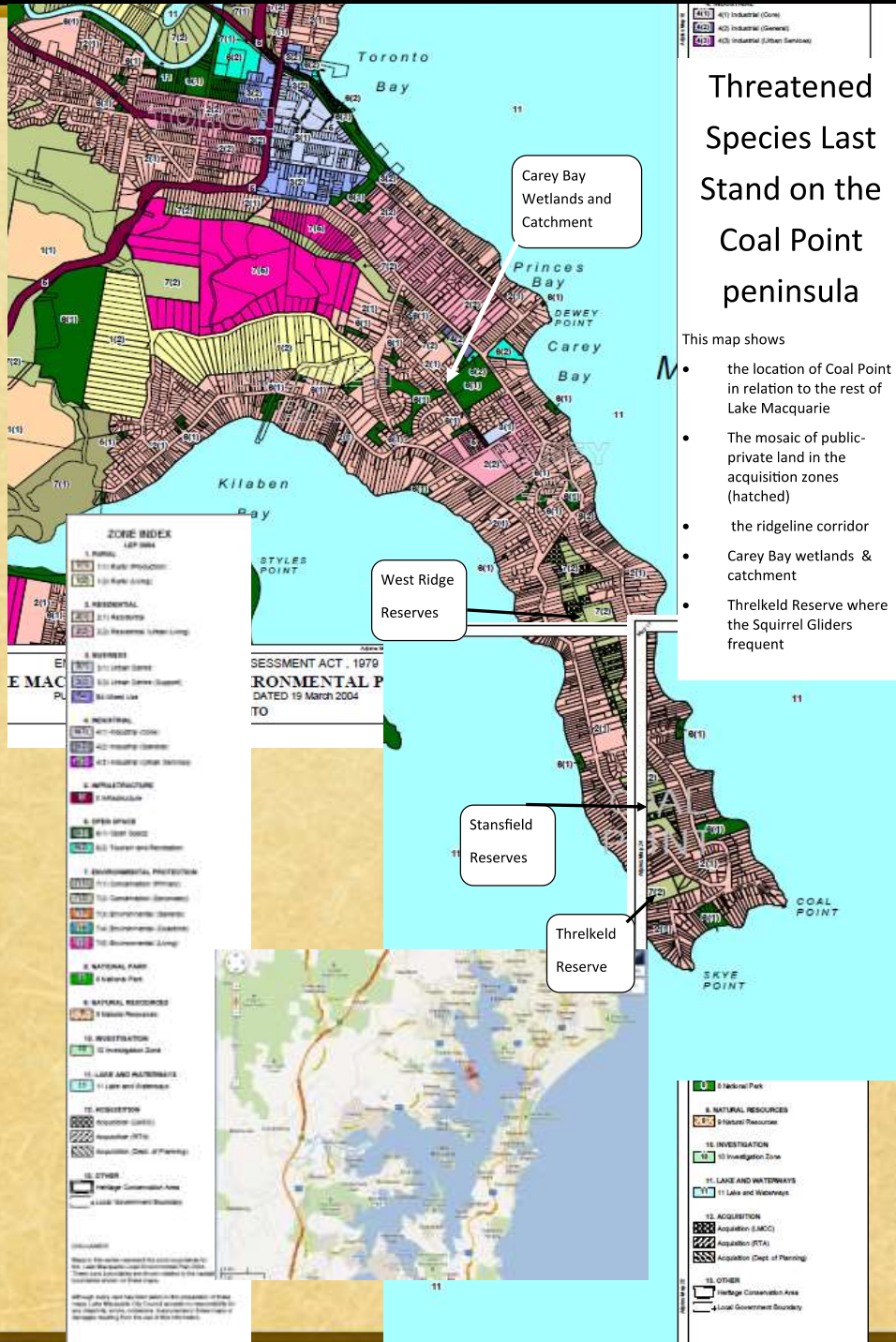


NEST BOXES- HOW TO GET THEM UP AND KEEP THEM UP

Threatened Species Last Stand on the Coal Point Peninsula

This program has been assisted by the New South Wales
Government through its Environmental Trust





Threatened Species Last Stand on the Coal Point peninsula

- This map shows
- the location of Coal Point in relation to the rest of Lake Macquarie
 - The mosaic of public-private land in the acquisition zones (hatched)
 - the ridgeline corridor
 - Carey Bay wetlands & catchment
 - Threlkeld Reserve where the Squirrel Gliders frequent

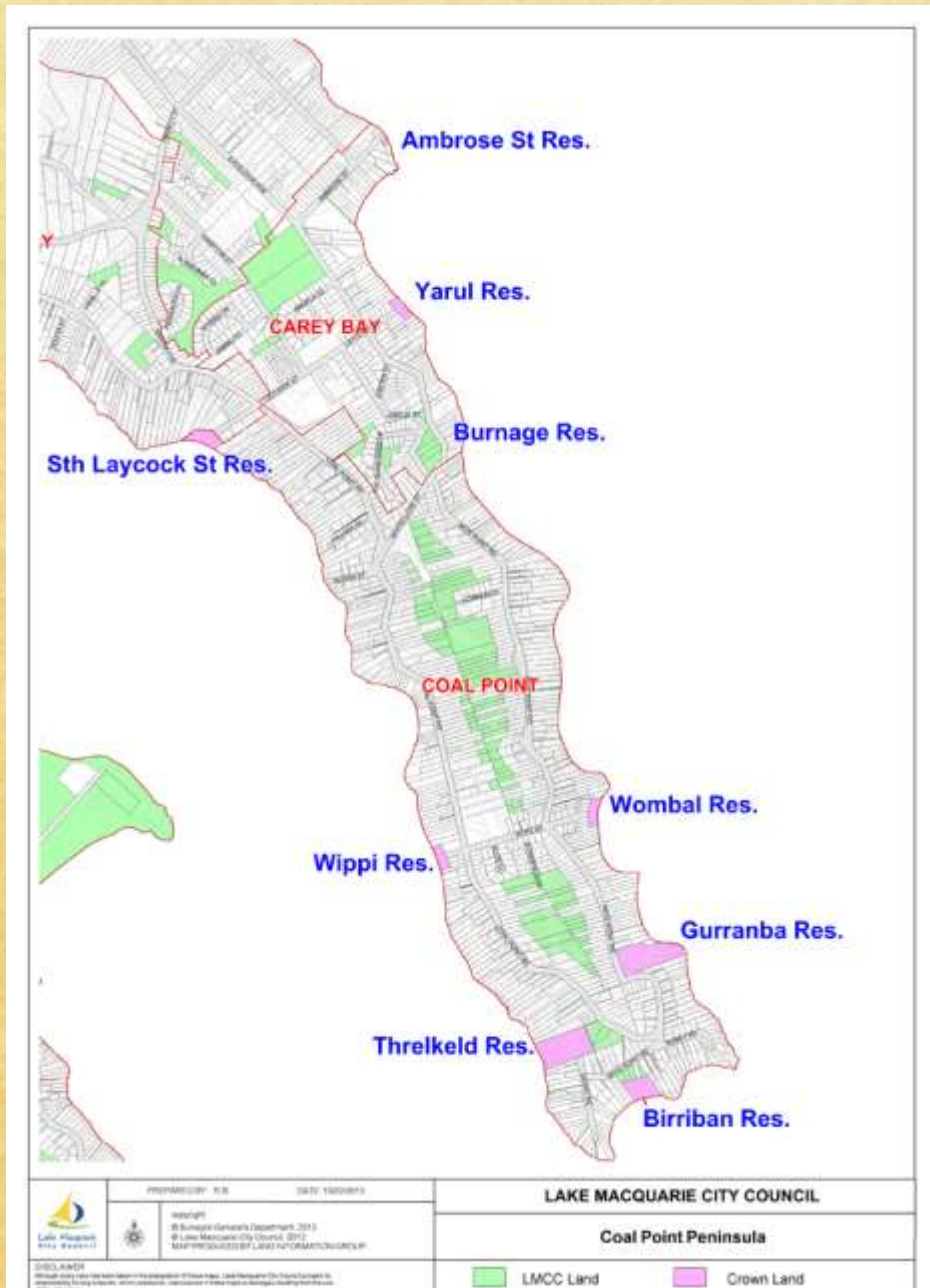
ZONE INDEX
LEP 2004

1. PUBLIC	1.1 Public Production
2. RESIDENTIAL	2.1 Residential (Urban Long)
3. BUSINESS	3.1 Local Centre
4. INDUSTRIAL	4.1 Industrial (General)
5. INFRASTRUCTURE	5.1 Infrastructure
6. OPEN SPACE	6.1 Open Space
7. ENVIRONMENTAL PROTECTION	7.1 Environmental (Planning)
8. NATIONAL PARK	8.1 National Park
9. NATURAL RESOURCES	9.1 Natural Resources
10. INVESTIGATION	10.1 Investigation Zone
11. LAKE AND WATERWAYS	11.1 Lake and Waterways
12. ACQUISITION	12.1 Acquisition (MCC)
13. OTHER	13.1 Heritage Conservation Area

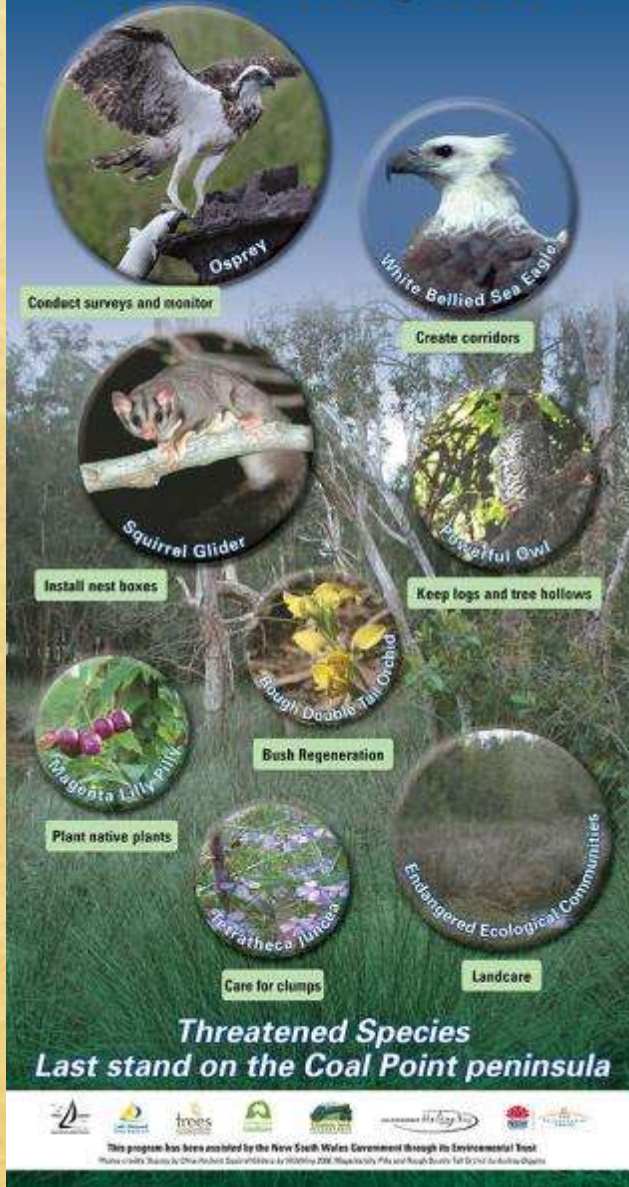
10	Investigation Zone
11	Lake and Waterways
12	Acquisition (MCC)
13	Heritage Conservation Area

Map of the area shown in this document is for information only. It is not a legal document. The Council is not responsible for the accuracy of the information shown. Information is subject to change without notice. For more information, please contact the Council's Planning Department.

Public and private land



How do you save a Threatened Species?



3 Endangered Ecological Communities

- Swamp Oak Floodplain Forest
- Swamp Sclerophyll Forest on Coastal Floodplain
- Coastal Saltmarsh

2 Endangered Populations

- Magenta Lilly Pilly
- Powerful Owl

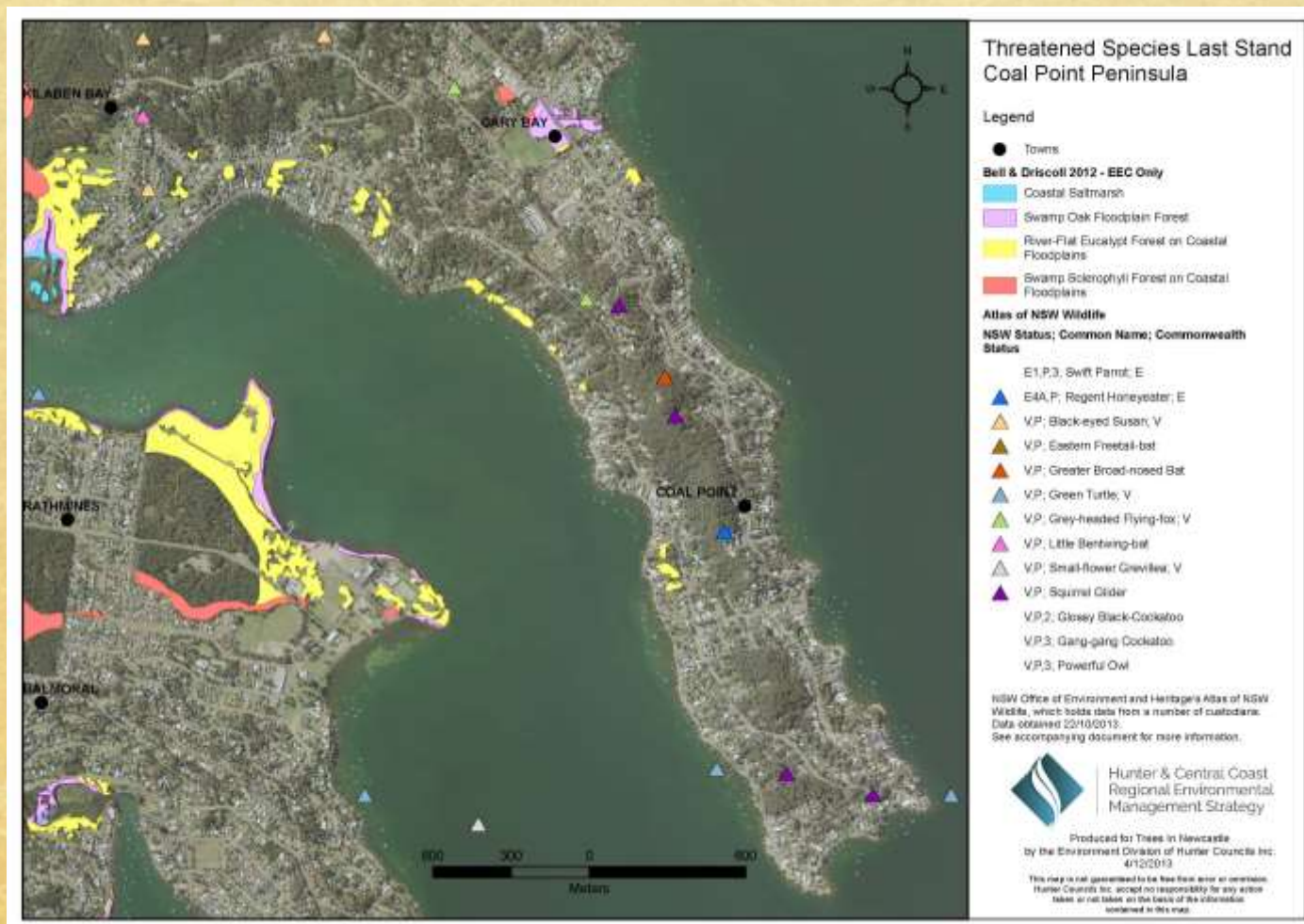
5 Species at Risk

- Squirrel Glider
- Osprey
- White-Bellied Sea Eagle
- *Tetratheca juncea*
- *Macrozamia flexuosa*

1 Critically endangered species

- Regent Honeyeater

The 2013 recorded endangered species





Our Love-link



Building the Boxes



BUNNINGS warehouse

Search: Drive site:

LOWEST PRICES ARE JUST THE BEGINNING...

Our Range **B.I.T. Advice** **Nearest store Glendale** Today 7:00am - 8:00pm Sat 7:00am - 6:00pm
9 Carron TC Frish Ave and Mundung Road W 302 4922 4100 **Design Store**

Local Community Support

Home - About Us - The Community - Local Community Support

Nest box plans

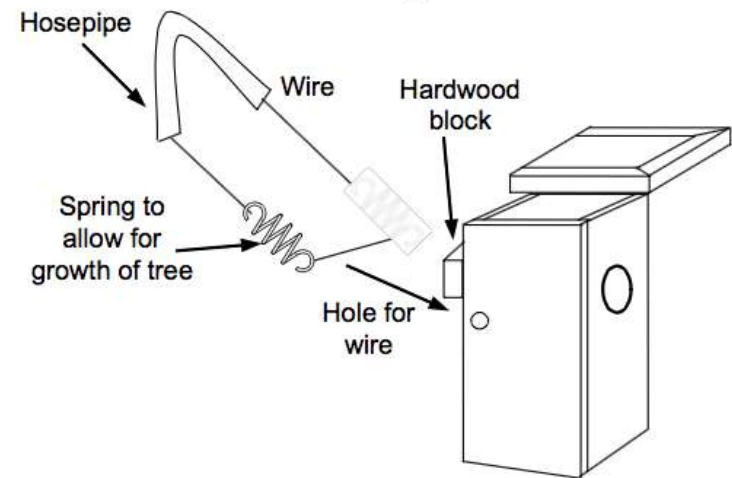
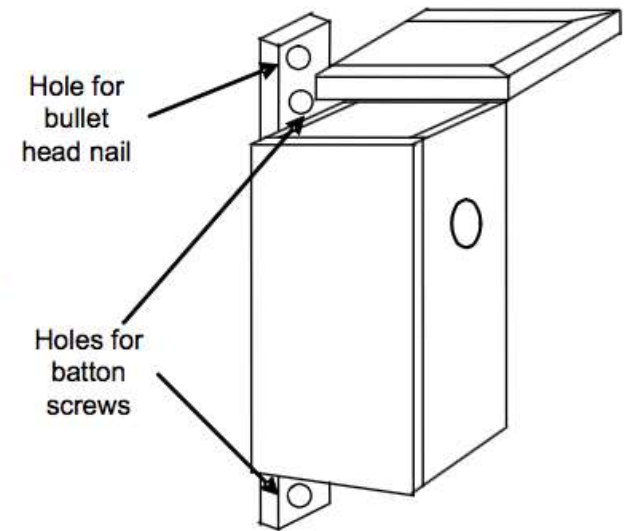
 **Local Land Services**
Greater Sydney

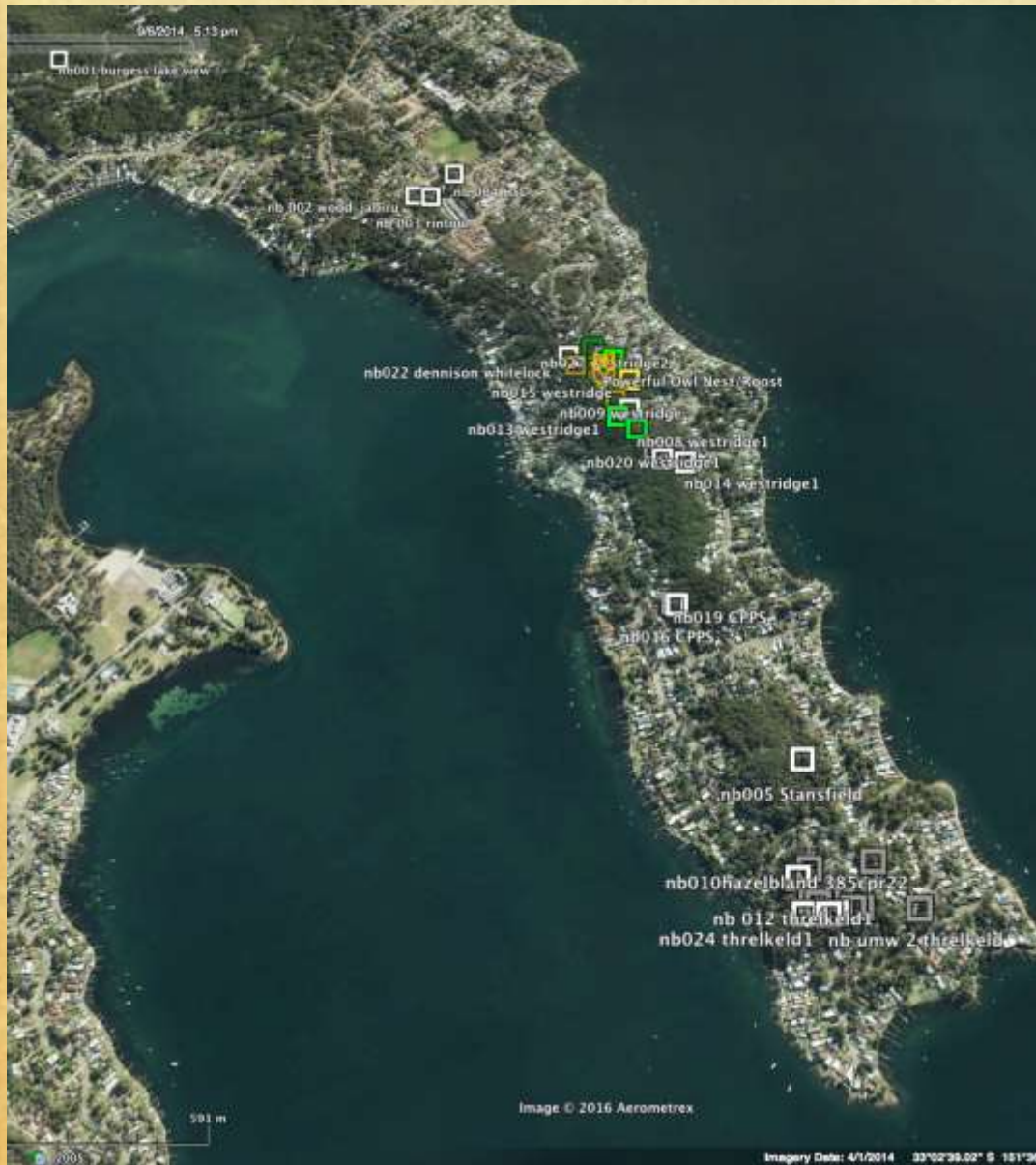


Build your own Wildlife Nest Box.
A guide for Western Sydney



www.lls.nsw.gov.au





**Location
Location
Location**

Local landholders





- Vegetation Communities (Endangered Ecological Communities in brackets)**
 Source: Bell & Driscoll 2012
- 15h - Lake Macquarie Spotted Gum Forest
 - 30h - Sugarloaf Lowlands Bloodwood - Apple Forest
 - 38 - Foreshore Redgum-Rough-barked Apple Forest (EEC: River-Flat Eucalypt Forest on Coastal Floodplains)
 - 40 - Swamp Oak - Rushland Forest (EEC: Swamp Oak Floodplain Forest)
 - 37 - Swamp Mahogany - Paperbark Forest (EEC: Swamp Sclerophyll Forest on Coastal Floodplains)
 - 11 - Coastal Sheltered Apple-Peppermint Forest
 - 30f - Freemans Peppermint-Apple-Bloodwood Forest

- Corridors**
 Source: LMCC Native Vegetation & Corridors map 2011
- Crossing Point
 - Rehabilitation Corridor
 - Corridor narrowed to <200 metres in width
 - Rehabilitation Urban Corridor
 - Riparian Corridor



The corridor
 we're trying
 to connect

Installation practice makes perfect.

Coal Point Progress Association
Homepage of the Coal Point Progress Association Inc. 2015 Community Group of


Home Calendar of Events A map of the local area The Landcare Program
The Plants in our Bigger Backyard The Animals in our Bigger Backyard The Change
Who's writing this blog? Coal Point Chronicle-Print version

MONDAY, 28 JULY 2014

Securing a future for the local Squirrel Gliders

The TSL5 project aims to provide suitable habitat for the local Threatened Species, of which the Squirrel Glider is one.

Squirrel Gliders are hollow-dependent, they need tree hollows...or nest boxes to survive. In order to give them the best chance of survival around Coal Point the TSL5 project is coordinating a mass installation of nest boxes on September 4th to celebrate Threatened Species Day in conjunction with Lake Macquarie Landcare's Super Saturday Session.



The Toronto Men's Shed has developed a prototype nestbox and will be going into production over the next month.

Do you want a nestbox on your block?
Please contact Suzanne (Committee contact) with your location details.

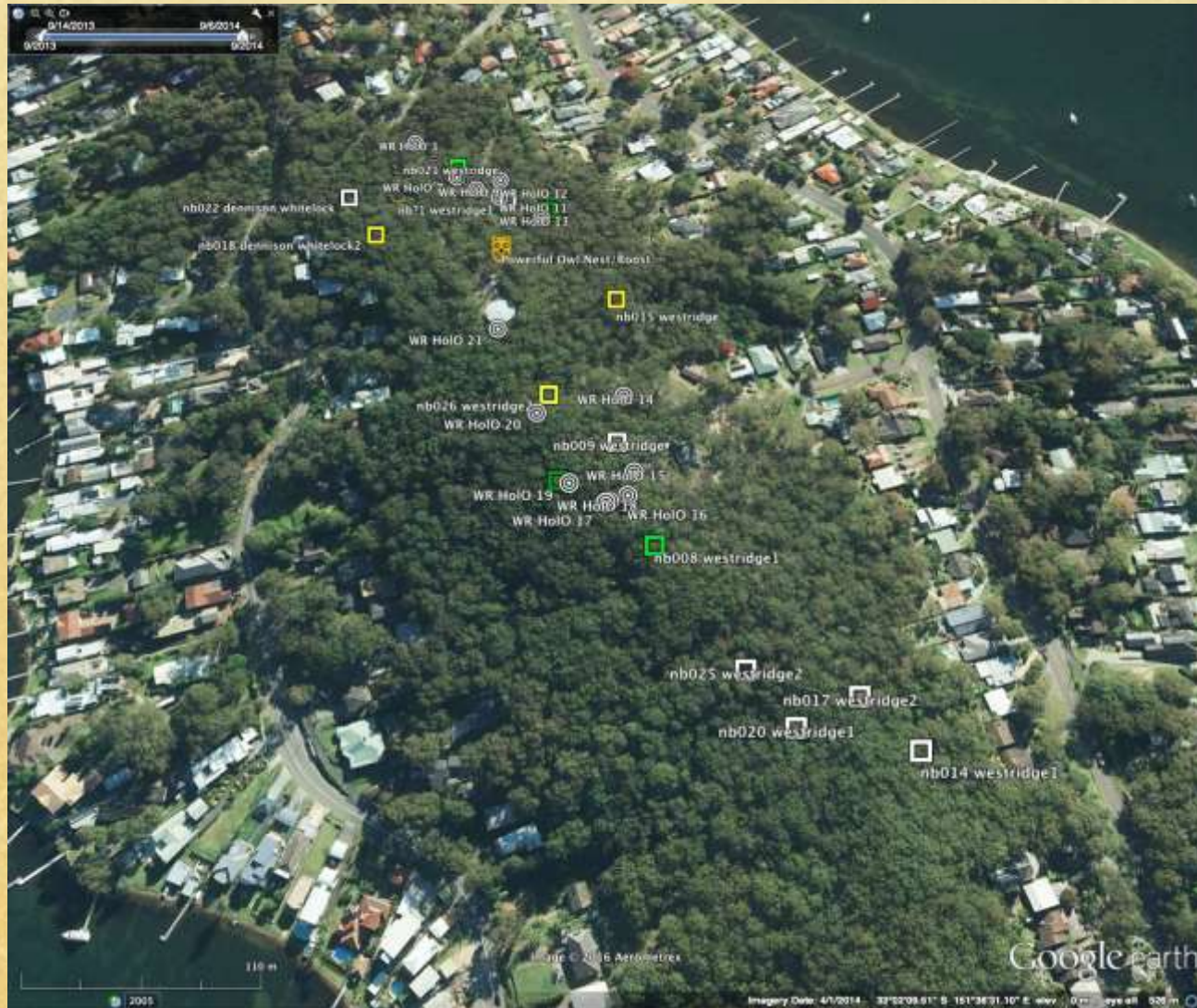
A trial of the location and installation process will be conducted as part of the Hunter Region Landcare's Network meeting on August 9th at noon at Progress Hall.



Mass installation – A Super Saturday session



Meaningful Monitoring



Powerful Owls move in



Early results





SQUIRREL GLIDER GARDEN

Schools Tree Day, Friday 30th July 2015

100 Squirrel Glider food shrubs were planted



Thank you Kinder, Year 1 & Year 6 buddies for doing such a fabulous job making habitat for the Squirrel Gliders at Coal Point Public School.



What's Next?



Opportunities to get involved

- Have a Backyard Habitat Health assessment undertaken on your land to find out what hidden treasures you have.
- Install a Squirrel Glider nestbox and get involved in monitoring the inhabitants
- Keep an eye on local developments
- Protect and expand the corridor
- Plant local native plants
- Know your local weed threats and how to control them
- Come Landcaring every Thursday around Coal Point
- Join the Progress Association
- Join the Toronto Area Sustainable Neighbourhood group
- Sign up for Backyard Habitat for Wildlife
- Visit the Coal Point Progress website

<http://coalpointprogress.blogspot.com.au>



Landcare legends, Robyn Gill, Suzanne Pritchard and Lois Simpson learning more about Eucalypt ID

Threatened Species Last Stand on the Coal Point Peninsula

This program has been assisted by the New South Wales
Government through its Environmental Trust

