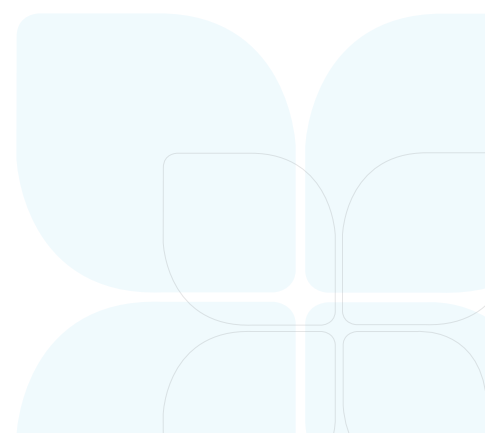
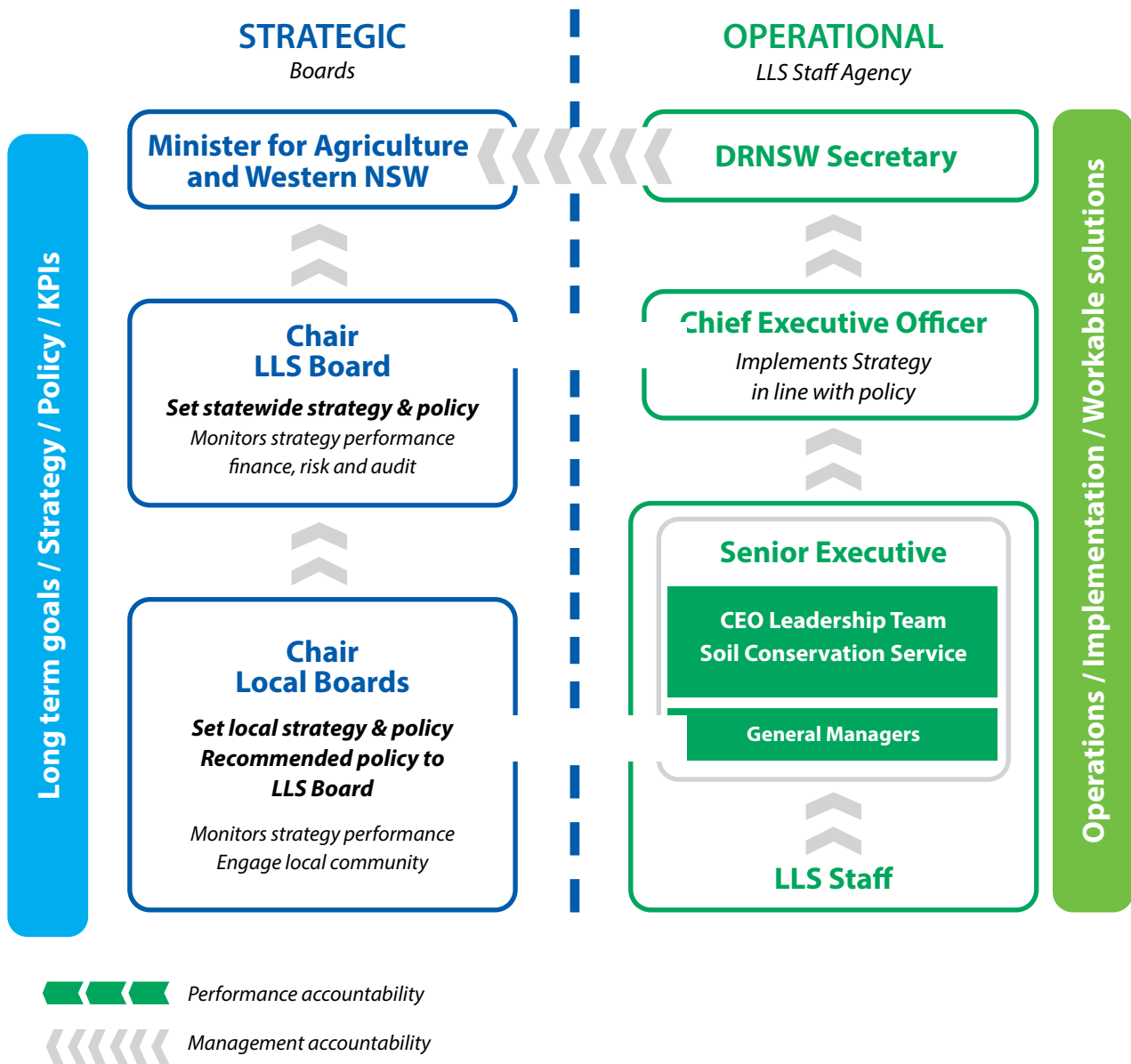


Key contacts

Local Land Services helps secure the future of agriculture and the environment for NSW communities. We help grow farm productivity and healthy environments and protect against pests, diseases and environmental threats. We are here when it matters, connecting people with knowledge, networks and local experience.

Local Land Services Structure



CEO Leadership Team

The CEO Leadership Team is responsible for the oversight of the whole of Local Land Services business including finance, performance, risk, assurance, IT, strategy, policy, engagement and the Soil Conservation Service.

Local Land Services operates as a single executive agency designed to deliver tailored on-ground programs and services to the customers of NSW. A great strength of the Local Land Services model is that it fosters local decision making and supports local communities across a range of key service delivery areas through our 11 Local Land Services regions and Local Boards.



Chief Executive Officer

Steve Orr

steve.orr@lls.nsw.gov.au

Executive Director, Regional Operations

Rob Kelly

rob.kelly@lls.nsw.gov.au
0409 535 1311



Chief Financial Officer

Matt Walker

matt.walker@lls.nsw.gov.au
0438 801 360

Director, Strategy and Engagement

Sue-Anne Nicol

sue-anne.nicol@lls.nsw.gov.au
0409 724 992



Director, ICT Program

Catherine Daniel

catherine.blyth@lls.nsw.gov.au
0419 723 932

Director, Policy and Reform

Adam Tyndall (Acting)

adam.tyndall@lls.nsw.gov.au
0447 824 065



Regional Operations Leadership Team

The Senior Executive Team lead their staff to deliver locally relevant, on-ground results. They drive cross regional collaboration and customer and investor focused services.

They plan, guide and oversee regional operational functions which are consistent with Local Land Services state and regional strategic objectives.

They promote Local Land Services and engage with local communities and stakeholders, building productive partnerships to deliver our objectives, programs and projects.

Under this arrangement, all regional general managers (GM) have a functional reporting arrangement to the Executive Director Regional Operations.

They work with local board members, stakeholders, investors and community groups to deliver locally tailored and relevant programs.

General managers, as well as all executive management, are responsible for the safety and well being of their staff with the strategic objective of 'every person home safe and well every day'.



GM Central Tablelands

Ian Shepherd

ian.shepherd@lls.nsw.gov.au

0407 212 688

Based in Cowra



GM Central West

Andrew Mulligan

0417 216 617

andrew.mulligan@lls.nsw.gov.au

Based in Wellington



GM Murray

Gary Rodda

0409 173 600

gary.rodde@lls.nsw.gov.au

Based in Deniliquin



GM Hunter

Brett Miners

0427 346 263

brett.miners@lls.nsw.gov.au

Based in Paterson



GM North Coast

Louise Orr

0428 291 829

louise.orr@lls.nsw.gov.au

Based in Coffs Harbour



GM Greater Sydney

Sharon Elliott

0408 021 297

sharon.elliott@lls.nsw.gov.au

Based in Penrith



GM North West

James Hutchinson-Smith

0428 485 985

james.hutchinsonsmith@lls.nsw.gov.au

Based in Tamworth



GM Northern Tablelands

Paul Hutchings

0427 959 464

paul.hutchings@lls.nsw.gov.au

Based in Inverell



GM South East

Luke Pope

0427 279 802

luke.pope@lls.nsw.gov.au

Based in Cooma



GM Western

Erlina Compton

0458 944 614

erlina.compton@lls.nsw.gov.au

Based in Dubbo



GM Riverina

Ray Willis

0429 910 132

ray.willis@lls.nsw.gov.au

Based in Wagga Wagga



Department and board structure

Secretary of Department of Regional NSW

Senior executives, including the general managers, are employed by the Secretary of the Department of Regional NSW, Gary Barnes. In keeping with the legislative requirements of the **Government Sector Employment (GSE) Act**. The Secretary makes decisions on hiring, reassignment or removal of all Local Land Services executives (including General Managers) after consulting with the Chair and Chief Executive Officer.

Board



Chair of Local Land Services

Alison Harker

This is a part-time role with a clear focus on strategic oversight.

Our board members are a vital link between Local Land Services and the communities we serve. Our board members bring a wealth of skills, experience and commitment to the organisation.

Local Land Services board

Local Land Services Board is comprised of the each of the chairs of the 11 regional boards. Their focus is steering Local Land Services on behalf of the Minister in relation to:

- organisational governance and strategy
- risk management
- service delivery priorities
- community engagement

Local board members

There is a local board for each of the Local Land Services regions. There are 80 local board members which are either Ministerially-appointed or elected.

The board members have legislated functions with four main focus areas:

- strategy - oversight of delivery of local strategic plan
- community engagement - linking communities and the organisation
- advocacy - promoting Local Land Services, our staff and the services we offer
- advice - providing advice to the Local Land Services Board for their decision.



Central Tablelands

Ian Rogan

Based in Millthorpe



Central West

Susan Madden

Based in Dubbo



Greater Sydney

Robert Webster

Based in Sydney



North Coast

Bob Smith
Based in Mylestrom



Murray

Derek Schoen
Based in Corowa



North West

Richard Clarke
Based in Boggabilla



Hunter

Tony Hegarty
Based in Cassilis



South East

Allison Harker
Based in Yass



Riverina

Barney Hyams
Based in Batlow



Northern Tablelands

Grahame Marriott
Based in Inverell



Western

Magnus Aitken
Based in Conargo

